

PARRISH ART MUSEUM

ANNUAL REPORT 2021



METRICS

43,025

TOTAL ATTENDANCE

2,518

MEMBERS

17

EXHIBITIONS

39

ACQUISITIONS

(20 NEW ARTISTS ADDED TO THE COLLECTION)

48

CONCERTS, TALKS, FILMS

6,234

PROGRAM ATTENDEES

3,583

EDUCATION PROGRAM PARTICIPANTS

5,559

TOUR GUESTS

33,109

SOCIAL MEDIA FOLLOWERS

1,115

EDITORIAL PLACEMENTS

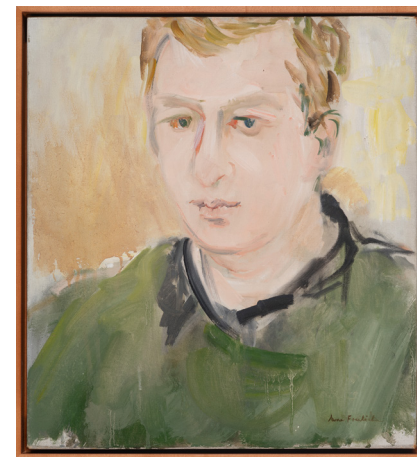


Cover: **Martin Creed**
Work No. 2210, EVERYTHING IS GOING TO BE ALRIGHT
 (2015) Multicoloured neon,
 61 x 2127 1/2 cm / 24 x 837
 5/8 inches. Installation view,
 Parrish Art Museum.
 Courtesy the artist and
 Hauser & Wirth. Photo:
 Thomas Barratt. © Martin
 Creed. All Rights Reserved,
 © 2021 Artists Rights Society
 (ARS), New York / DACS,
 London. Photo: Gary Mamay

2021 Acquisition
Claude Lawrence
East Side Ruminations, 2007
 Acrylic on canvas, 38 x 59
 inches
 Gift of Kathryn C. Chenault,
 and Lyn and E.T. Williams, Jr.
 Photo: Gary Mamay



2021 Acquisition
Arshile Gorky
Untitled, 1943
 Crayon with graphite on paper laid on canvas, 23 x 28 3/4 inches
 Gift of Sandy and Stephen Perlbinde



2021 Acquisition
Jane Freilicher
Portrait of John Gruen, 1960
 Oil on linen, 28 x 15 inches
 Gift of Elizabeth Hazen and Stephen Hicks

LETTER TO OUR FRIENDS

Throughout 2021, the Parrish remained steadfast in its mission to connect the community with art and artists in the face of continuing challenges posed by the COVID-19 pandemic. Save for a two-month closure in January and February, the Museum was open the entire year with enhanced safety precautions and adherence to health guidelines. At the same time, the Parrish's staff and Board of Trustees were diligent in their commitment to restore programming to pre-pandemic levels and recover from staff attrition.

The Museum reached more than 43,000 in-person visitors by presenting 17 compelling exhibitions including *Roy Lichtenstein: History in the Making*, and *Affinities for Abstraction* featuring work by 42 women artists with ties to the area. Furthering its commitment to addressing social change through the arts, the Parrish opened *Tomashi Jackson: The Land Claim*—a landmark exhibition, publication, and roster of public programs focused on the experiences of Indigenous, Black, and Latin families on Long Island. These exhibitions garnered world-wide critical acclaim from publications including *The Wall*

Street Journal, *The New York Times*, *The New Yorker*, *Vogue*, *Gallerie*, *Newsday*, and many other regional, national, and international outlets.

Thousands of visitors engaged with the Parrish through forward-thinking education and public programs, including sensitively designed workshops for myriad audiences with unique needs such as individuals with autism, Alzheimer's, and Parkinson's. The Museum presented festive, well-attended benefit events including a gala weekend of the *Midsummer Dinner*, *Midsummer Dance*, and *Summer Family Party*. The endorsement from all sectors of the community paid testament to the Museum's role as the preeminent resource for cultural engagement on the East End of Long Island and beyond.



EXHIBITIONS

COLLECTION-BASED EXHIBITIONS

MATERIAL WITNESS

NOVEMBER 2, 2020–SEPTEMBER 1, 2021

An exploration of artists' materials by Ross Bleckner, Simone Leigh (loan), Louise Nevelson, Donald Sultan.

XS (EXTRA SMALL)

APRIL 17–APRIL 3, 2022

Small works by Sydney Albertini, Will Barnet, Oscar Bluemner, David Burliuk, Louisa Chase, Arthur B. Davies, Joe Fig, Robert Gober, Joseph Glasco, Frederick Hammersley, Jasper Johns, Robert Kulicke, Sheridan Lord, Elizabeth Murray, John Opper, Raymond Parker, Betty Parsons, Lucio Pozzi, Aaron Shikler.

E PLURIBUS ONE

APRIL 18–SEPTEMBER 6, 2021

Photography by Linda K. Alpern, Eve Arnold, Richard Avedon, Tina Barney, Adam Bartos, Dawoud Bey, Jackie Black, Tommy Brown, Larry Clark, Jeremy Dennis, Elliot Erwitt, Lindsay Morris, Jean-Luc Mylayne, Herbert Randall, Spencer Tunick.

JOEL MEYEROWITZ, AFTERMATH: IMAGES FROM 9/11

SEPTEMBER 10, 2021–APRIL 3, 2022

Photographs taken by Meyerowitz at Ground Zero during the nine months after the attacks.

PICTURES IN PICTURES

NOVEMBER 18, 2021–APRIL 3, 2022

Art containing visual references to other works, by Otis A. Bullard, William Merritt Chase, Jane Freilicher, Li-Lan, Sheridan Lord, Paton Miller, Fairfield Porter, Henry Rittenberg, Larry Rivers, David Salle, Ben Schonzeit, Yinka Shonibare, Saul Steinberg, Joe Zucker.

ENCOUNTERS: RECENT ACQUISITIONS

NOVEMBER 18, 2021–APRIL 10, 2022

Darlene Charneco, Esly E. Escobar, Rachel Feinstein, Candace Hill Montgomery, Tomashi Jackson, Laurie Lambrecht, Barthélémy Togo, Sara VanDerBeek, Frank Wimberley.

SPECIAL EXHIBITIONS

FIELD OF DREAMS

AUGUST 20, 2020–OCTOBER, 2021

Inaugural outdoor exhibition that activated the Meadows with sculpture responding to the Parrish architecture and landscape, featuring Max Ernst, Theaster Gates, Isa Genzken, Giuseppe Penone, Jaume Plensa, and Bernar Venet; and collection artists Jim Dine, Roy Lichtenstein, Joel Perlmán, Joel Shapiro.

The Field of Dreams exhibition was made possible, in part, by the generous support of Jane Squier in memory of her husband Jack Squier; Glenn Fuhrman and FLAG Art Foundation; Irma and Norman Braman Philanthropic fund in honor of Mary Frank; In The

Works Fund at The Chicago Community Fund, and Daniel Shedrick, and with the participation of Gray Gallery; Galerie Lelong & Co; Kasmin Gallery; and Hargreaves Jones, Landscape Architects. We are grateful to Friends of the Field contributors Jackie Brody and Yanina and Allan Spivack for their generosity and shared vision for this project.

2021 STUDENT EXHIBITION

MARCH 12–APRIL 18, 2021

This more than 65-year tradition presented work by 600 students from Eastern Long Island schools.

The exhibition and accompanying programs were supported in part by property taxpayers from the Southampton School District and Tuckahoe Common School District.

LONNIE HOLLEY AT THE ELAINE DE KOONING HOUSE: EVERYTHING THAT WASN'T WHITE

APRIL 24–NOVEMBER 7, 2021

Thirty-five new paintings, works on paper, and sculptures created during Holley's 2020 artist-in-residency at the Elaine de Kooning House, East Hampton.

AFFINITIES FOR ABSTRACTION: WOMEN ARTISTS ON EASTERN LONG ISLAND, 1950–2020

MAY 2–JULY 18, 2021

Work by 42 women artists that expands and exploits the language of abstraction.

The exhibition was made possible, in part, thanks to the generous support of Stephen Meringoff, The Deborah Buck Foundation, Ellen and Howard Katz, Helen Frankenthaler Foundation, Caroline Hirsch and Andrew Fox, Garrett and Mary Moran, Leslie Rose Close, Herman Goldman Foundation, and Fred Schmelzter. Public support provided by Suffolk County.

MARTIN CREED: WORK NO. 2210: EVERYTHING IS GOING TO BE ALRIGHT (2015)

MAY 19, 2021–MARCH 28, 2022

Installed on the south façade, the 70-foot-long neon sculpture of rainbow-hued text expresses Creed's desire to connect, and provoke.

The Parrish extends special thanks to Hauser & Wirth for their participation and generosity in support of the installation of this project.



Above: 2021 Acquisition

Tomashi Jackson

The Three Sisters, 2021

Acrylic, wampum dust, soil from the Parrish Art Museum grounds, a former potato field, on canvas, cotton textiles, paper potato bags, and paper bags with archival prints on PVC marine vinyl mounted on handcrafted walnut, Douglas fir, and redwood awning structure with brass hooks and gromets, 95 x 66 1/2 x 12 1/2 inches. Museum Purchase with funds provided by Ellen and Howard Katz. Photo: Gary Mamay

Opposite Page: Installation view of Roy Lichtenstein: *History in the Making*, 1948–1960. Photo: Gary Mamay

TOMASHI JACKSON: THE LAND CLAIM

JULY 11–NOVEMBER 7, 2021

Featuring new paintings, a sound installation, and a study room, the exhibition—centered on lived experiences of Indigenous, Black, and Latinx families on the East End—was the culmination of Jackson's 12-month research including oral interviews with historians and community leaders, historical images, and news article analysis.

Tomashi Jackson: The Land Claim was made possible thanks to the generous support of The Andy Warhol Foundation for the Visual Arts; National Endowment for the Arts; The Bandier Family Foundation; The Mr. and Mrs. Raymond J. Horowitz Fund for Publications; The Dorothy Lichtenstein ArtsReach Fund, established by Agnes Gund; Connie Tilton; The Lumpkin-Boccuzzi Family; The Deborah Buck Foundation; Miyoung Lee and Neil Simpkins;

Continued on next page.

Sandy and Stephen Perl binder; The Speyer Family Foundation, and Nina Yankowitz. The Museum is grateful to Night Gallery, Los Angeles and Tilton Gallery, New York, for their in-kind support. We are pleased to partner with The Watermill Center in support of Tomashi Jackson's project and acknowledge their generous partnership through their Inga Maren Otto Fellowship.

ROY LICHTENSTEIN: HISTORY IN THE MAKING, 1948–1960

AUGUST 1–OCTOBER 24, 2021

The exhibition told the largely overlooked story of Lichtenstein's early career, when formal experimentation and irony defined his art.

Support for the exhibition and its national tour was provided by the Roy Lichtenstein Foundation. Additional catalogue support was provided by the Wyeth Foundation for American Art.

PARRISH ROAD SHOW 2021: DARLENE CHARNECO—SYMBIOSOME SCHOOLHOUSE

AUGUST 28–OCTOBER 24, 2021

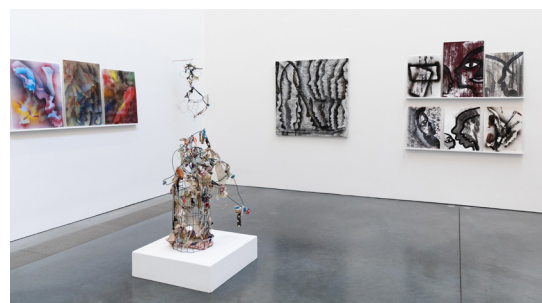
Part of our off-site community engagement series, the site-specific exhibition at Oysterponds Historical Society in Orient, NY, featured wall sculpture weaves and Touchmaps, created to mimic networks of human connection.

The exhibition was made possible, in part, by the generous support of Sandy and Stephen Perl binder; and Jane Wesman and Donald Savelson. Public funding was provided by Suffolk County.

PETER CAMPUS: WHEN THE HURLY BURLY'S DONE

NOVEMBER 7, 2021–FEBRUARY 27, 2022

The seminal artist in the canons of new media and video art positioned his camera around Shinnecock Bay, resulting in six meditations on the beauty of the natural landscape.



Installation view of Lonnie Holley at the Elaine de Kooning House: *Everything That Wasn't White*. Photo: Gary Mamay.



Installation view of *Affinities for Abstraction: Women Artists on Eastern Long Island, 1950–2020*. Photo: Gary Mamay.

VIRGINIA JARAMILLO: THE HARMONY BETWEEN LINE AND SPACE

NOVEMBER 7, 2021–FEBRUARY 27, 2022

Never-before-seen paintings and drawings by the pioneering minimalist, completed over two years.

JOHN TORREANO: PAINTING OUTER SPACE/INNER SPACE, 1989 TO PRESENT

NOVEMBER 7, 2021–FEBRUARY 27, 2022

Large-scale paintings, inspired by images recorded by the Hubble Space Telescope, that incorporated gems to create space-like constellations.

OUTGOING LOAN

MEL KENDRICK: SEEING THINGS IN THINGS

Organized by the Addison Gallery of American Art, Phillips Academy
Andover, MA
April 10–October 3, 2021

Mel Kendrick (American, born 1949)

Untitled, 2012

Mahogany with Japan color and gesso

52 ½ x 12 ¾ x 13 ¼ inches

Parrish Art Museum, Water Mil, New York, Museum purchase with funds provided by the Collector's Circle and the Evelyn Toll Family Foundation 2014.14

PUBLICATION

TOMASHI JACKSON: THE LAND CLAIM

Edited by Corinne Erni, Tomashi Jackson, K. Anthony Jones, Martha Schnee. Foreword by Kelly Taxter. Introduction by Tomashi Jackson. Texts by Corinne Erni and Eric N. Mack. First published in 2021 by the Parrish Art Museum with distribution by DeMonico Books. D.A.P., 96 pages

ACQUISITIONS

GELI (Gift Edition Long Island)

Limited edition boxed set of original artworks by 15 emerging and established artist based on Long Island, including 15 prints, a digital media player containing 15 digital works, color catalogue with essays about the collection by Corinna Kirsch, and certificates of authenticity for all works. 3 x 24 x 18 inches (closed)
Gift of the artists, 2021.11

Isabel Bishop (American, 1902–1988)

Nude, 1925

Etching, 15 1/4 x 10 1/2

Gift of the Estate of Mildred Brinn, 2021.1.1

Isabel Bishop (American, 1902–1988)

Two Girls Outdoors, 1953

Etching, 13 x 10 inches

Gift of the Estate of Mildred Brinn, 2021.1.2

Scott Bluedorn (American, born 1986)

Genesis Flux, 2019

Graphite on paper, 108 x 108 inches

Museum Purchase with funds provided by Jane Wesman, 2021.3.1

Scott Bluedorn (American, born 1986)

Pinus Polaris, 2021

Acrylic on canvas, 28 x 18 inches

Museum Purchase with funds provided by Jane Wesman, 2021.3.2

James Brooks (American, 1906–1992)

R1953, 1953

Oil on canvas, 82 1/2 x 89 inches

Gift of JPMorgan Chase, 2021.2.1

Vija Celmins (American, born Latvia, 1938)

Comet, 1992

Linocut, 15 5/8 x 17 3/4 inches

Gift of the Estate of Mildred Brinn, 2021.1.3

Darlene Charneco (American, born 1971)

Mutual Medicine Flower, 2020

Nails, resin, enamel, and acrylic on wood, 20 inches (diameter)

Museum Purchase, Mr. and Mrs. Robert F. Carney Fund, 2021.15

Rachel Feinstein (American, born 1971)

See You Soon, 2001

Wood, plaster, wire, resin, gold leaf, and enamel
68 x 71 x 37 inches

Gift of Dean Valentine and Amy Adelson, 2021.5

Janet Fish (American, born 1938)

Untitled (Flowers), 1990

Lithograph, 23 1/2 x 18 3/8 inches

Gift of the Estate of Mildred Brinn, 2021.1.4

Eric Freeman (American, 1970–2021)

Untitled, 2002

Oil on canvas, 42 x 144 inches

Gift of Stormy Byorum Good, 2021.18

Jane Freilicher (American, 1924–2014)

Portrait of John Gruen, 1960

Oil on linen, 28 x 15 inches

Gift of Elizabeth Hazen and Stephen Hicks, 2021.10

Robert Gober (American, born 1954)

Untitled (Extra Buttons), 1994

Paper, string, synthetic polymer, and fabric, 3 1/2 x 2 1/2 x 1/4 inches

Gift of the Estate of Mildred Brinn, 2021.1.5

Arshile Gorky (American, born Armenia, 1904–1948)

Untitled, 1943

Crayon with graphite on paper laid on canvas,
23 x 28 3/4 inches

Gift of Sandy and Stephen Perl binder, 2021.17

Nancy Graves (American, 1939–1995)

Untitled, 1982

5 color etching, 27 x 21 3/4 inches

Gift of the Estate of Mildred Brinn, 2021.1.6

Joanne Greenbaum (American, born 1953)

Untitled, 2001

Ink on paper, diptych, 14 x 14 inches each

Gift of Sean Elwood and Yvonne Puffer
2021.9

Perry Guillot

The New Art Museum, 2002

Watercolor on paper, 12 x 30 inches

Gift of the Estate of Mildred Brinn, 2021.1.7

Lonnie Holley (American, born 1950)

Fragile Like a Child, 2020

Driftwood, twigs and stick with spray paint
22 x 10 x 3 1/2 inches

Gift of Matthew Arnett, 2021.12

Winslow Homer (American, 1836–1910)

Girl Posing in a Chair, 1875

Etching, 8 5/8 x 5 7/8 inches

Gift of the Estate of Mildred Brinn, 2021.1.8

Tomashi Jackson (American, born 1980)
The Three Sisters, 2021
 Acrylic, wampum dust, soil from the Parrish Art Museum grounds, a former potato field, on canvas, cotton textiles, paper potato bags, and paper bags with archival prints on PVC marine vinyl mounted on handcrafted walnut, Douglas fir, and redwood awning structure with brass hooks and gromets, 95 x 66 1/2 x 12 1/2 inches
 Museum Purchase with funds provided by Ellen and Howard Katz, 2021.16

Yvonne Jacquette (American, born 1934)
Untitled, 2005
 Pigmented inkjet print, 16 3/8 x 20 inches
 Gift of the Estate of Mildred Brinn, 2021.1.9

Virginia Jaramillo (American, born 1939)
Site: No. 15 13.5099° S, 71.9817° W, 2018
 Acrylic on canvas, 72 x 72 inches
 Anonymous Gift, 2021.13

Jasper Johns (American, born 1930)
Untitled, 1976
 Lithograph, 10 x 7 1/2 inches
 Gift of the Estate of Mildred Brinn, 2021.1.10

Gina Knee (American, 1898–1982)
Untitled, ca. 1950
 Etching, 4 x 3 inches
 Gift of Arlene Bujese, 2021.4

Henry Koehler (American, 1927–2018)
Beach Club, Sunday, 1999
 Oil on paper, 17 1/2 x 13 1/2 inches
 Gift of the Estate of Mildred Brinn, 2021.1.11

Claude Lawrence (American, born 1944)
East Side Ruminations, 2007
 Acrylic on canvas, 38 x 59 inches
 Gift of Kathryn C. Chenault, and Lyn and E.T. Williams, Jr., 2021.7

Robert Mangold (American, born 1937)
Untitled, 1985
 Woodcut on rice paper, 28 3/4 x 21 1/2 inches
 Gift of the Estate of Mildred Brinn, 2021.1.12

John Marin (American, 1870–1953)
Sailboat and Evergreen Tree, 1928
 Watercolor on paper, 14 1/2 x 18 inches
 Gift of the Estate of Mildred Brinn, 2021.1.13

Malcolm Morley (American, born Great Britain, 1931–2018)
Seascape with Two Horizons, 1980
 Watercolor on paper, 21 3/4 x 29 inches
 Gift of the Estate of Mildred Brinn, 2021.1.14

Louise Nevelson (American, born Ukraine, 1899–1988)
Untitled, 1976
 Etching with collage on paper, 18 1/2 x 16 inches
 Gift of the Estate of Mildred Brinn, 2021.1.15

George Rickey (American, 1907–2002)
Tetrahedron Variations, 1971
 Color lithograph, 22 x 18 inches
 Gift of the Estate of Mildred Brinn, 2021.1.16

Raphael Soyer (American, born Russia, 1899–1987)
Untitled (Mother and Child), n.d.
 Etching, 26 1/4 x 19 inches (irreg.)
 Gift of the Estate of Mildred Brinn, 2021.1.17

Fred Tomaselli (American, born 1956)
Chain Reaction, 2001. Iris print, 21 x 17 inches
 Gift of the Estate of Mildred Brinn, 2021.1.18

Richard Tuttle (American, born 1941)
Custom & Presentation 3, 1984
 Ink and marker on paper with plastic in artist's frame
 14 1/2 x 11 1/2 inches. Gift of Michelle Griffith,
 2021.8.1

Richard Tuttle (American, born 1941)
Custom & Presentation 8, 1984
 Ink and marker on paper with plastic in artist's frame,
 14 1/2 x 11 1/2 inches
 Gift of Michelle Griffith, 2021.8.2

Sara VanDerBeek (American, born 1976)
Lightning Strike I, 2016
 2 digital Cprints, 96 7/8 x 43 1/2 framed
 Gift of the artist, 2021.6.1

Sara VanDerBeek (American, born 1976)
Lightning Strike II, 2016
 2 digital Cprints, 96 7/8 x 43 1/2 framed
 Gift of the artist, 2021.6.2

Jane Wilson (American, 1924–2015)
Poles at Mecox, 1985
 Oil on canvas, 20 x 25 inches
 Gift of the Estate of Mildred Brinn, 2021.1.19

Jack Youngerman (American, 1926–2020)
BlackRed, 1959. Oil on canvas, 70 x 100 inches
 Gift of JPMorgan Chase, 2021.2.2



Talk with Donna De Salvo and Dorothy Lichtenstein.
 Photo: Tom Kochie



Workshop with Denise "Weetahmoe" Silva-Dennis.
 Photo: Victor Miranda

PROGRAMS

Public programs invite stimulating dialogue around timely topics at the intersection of all artistic disciplines and generate meaningful and lasting partnerships. Throughout 2021, a hybrid of in-person and online programs helped the Museum remain accessible throughout the fluctuating COVID response recommendations.

The Museum presented 27 lectures, panels, and conversations, 7 film screenings, 10 live classical or jazz music performances, and four public curator-led tours, welcoming 5,559 attendees (including 1,666 Museum members) both in-person and virtually. The Museum continued creative collaborations with community organizations such as **OLA of Eastern Long Island, Bridgehampton Child Care & Recreational Center, Hamptons Doc Fest, The Bridgehampton Chamber Music Festival, Hamptons Jazz Fest**, and many artists and scholars across the East End.

Notable programs included the *Black Film Festival*, screening *The Last Black Man in San Francisco* and *My Father the Mover*; *OLA Spanish Language Film Festival*, screening *La Llorona*; quarterly *PechaKucha Night Hamptons*; *Salon Series*—classical concerts in intimate settings held in May and November; outdoor summer concerts; and lectures and conversations, including **Donna de Salvo** and **Dorothy Lichtenstein**; and artists **Dorothea Rockburne** and **Tomashi Jackson** with **Parrish Curators Alicia G. Longwell** and **Corinne Erni**.

EDUCATION

Education reconnected with the Museum's audiences through onsite programs, hybrid formats, new initiatives, and ongoing partnerships. The team led over 500 tours, workshops, camp sessions, performances, and classes for over 5,000 children and adults. Collaborations continued with the **Southampton, Tuckahoe, Hampton Bays, and East Hampton School Districts**; 13 community organizations and institutions including the **Alzheimer's Disease Resource Center, Center for Parkinson's Disease at Stony Brook Southampton Hospital, East End Disability Associates, Southampton Fresh Air Home, Independent Group Home Living, The Retreat, Southampton Youth Association, Project Most**, and others listed below. The week-long *Visual Art Camps* served 128 children ages 6 to 11 who visited the galleries and created their own work. In a week-long residency, artist Lonnie Holley led nine workshops for school and community partners, and a professional development workshop with regional art teachers.

Access Parrish provided onsite and online experiences for incarcerated women at the **Suffolk County Correctional Facility** in Riverhead through the organization **New Hour for Women and Children-LI**, and for intellectually and developmentally disabled individuals (specifically those with dementia and on the autism spectrum, and their care partners) via weekly art-making workshops. The four-week off-site *Community Summer Program* served 70 children in Southampton Public Schools' **STAR** program, 30 from the **Bridgehampton Child Care & Recreation Center**, and participants in the **Flying Point Foundation for Autism Summer Camp**.



Tour with Artist-in-Residence Lonnie Holley.
Photo: Tom Kochie

MEMBERSHIP

Our visitors, loyal supporters, and membership base are the lifeblood of the Museum. While the Parrish felt the lingering impact of COVID-19 on philanthropic priorities and unpredictable schedules, the team launched a multiplatform campaign targeting 1,300 households and businesses to recapture lapsed memberships and reengage constituents. The revenue-based membership count for the year increased by 500 households and 15 businesses, to 1,684 Members and 45 Business Members.

With the introduction of vaccines and new safety protocols such as mask wearing, Membership reintroduced in-person programming, tours, and exhibition preview events in April that included eight special tours and events for high-engagement Membership levels that provide unique access to Museum brain trust. Those include Members of the Parrish Contemporary Circle, and Giving Circles (currently named Parrish Circle and Director's Council), who received invitations to private tours with the Museum's Curators and Director, exclusive off-site events, VIP passes to art fairs, and more. The Museum also hosted five Business Member events and three exhibition preview receptions for upper-level Members.



2021 Midsummer Dinner.
Photo: BFA/NY

BENEFIT EVENTS

The Museum presented highly successful benefit events, with minor adjustments. The annual *Midsummer Dance*, *Midsummer Dinner*, and *Summer Family Party* made for a festive weekend on August 13, 14, and 15. Combined, the events raised more than \$1.1 million for the Parrish. The *Dinner*, honoring artist **Tomashi Jackson**, was co-chaired by Deborah F. Bancroft and Preston T. Phillips; Laurence Milstein chaired the *Dance*; and Samantha Brand and Darice Fadeyi co-chaired the *Summer Family Party*.

Landscape Pleasures featured self-guided tours of four gardens on Long Island's North Fork, an exclusive cocktail party for sponsors at a private residence on Saturday, September 11, and a symposium on Sunday, September 12, featuring award-winning horticulturist **Patrick Cullina** and renowned landscape designer **Deborah Nevins**. The well-attended event raised more than \$58,000. The annual first quarter event, *Spring Fling*, was cancelled due to Covid restrictions.

DONOR RECOGNITION

The Parrish is deeply grateful to those who supported the Museum's exhibitions, program, and education initiatives in 2021.

\$50,000+

Art Bridges Foundation
Bank of America
Samantha Brand
Mildred C. Brinn / Tatiana Piankova Foundation
Joseph M. & Barbara Cohen Foundation
Susan and Timothy Davis
Mary and Howard S. Frank / Frank Family Charitable Foundation
Helen Frankenthaler Foundation
Glenn Fuhrman and FLAG Art Foundation
Milford D. and Janice B. Gerton / Arts and Letters Foundation
Richard Gray Gallery
Katja Goldman and Michael Sonnenfeldt
Agnes Gund / AG Foundation
Ellen and Howard Katz
Dorothy Lichtenstein / Imperfect Family Foundation
The Lichtenstein Foundation
New York State Council on the Arts
Sandy and Stephen Perlinder
Residents of Southampton School District
Robin and Frederic Seegal
Gift of Jane Squier in Memory of Jack Squier

\$20,000-\$49,999

Lynn and Joseph Abboud
Alan S. Alder
Ryan C. Alexander
The Bandier Family Foundation
The Barry Friedberg and Charlotte Moss Family Foundation
Pamela Boker
Susan and Stephen Bolick
Bobbie Braun / The Neuwirth Foundation, Inc.
Shelley and Michael Carr
Jennifer and Sean Cohan
Jamie Cooke
Gale and Ira Drukier
Marcia Dunn Sobel and Jonathan Sobel
Darice and Jason Fadeyi
Laura and Michael Fisch
Eve Goldberg
Sharon and Jay Goldberg
Elizabeth and David Granville-Smith
Lisa and Mitchell Green / Green Family Fund
Nicole and David Gruenstein
Linda Hackett and Melinda Hackett/ CAL Foundation
Jane Hait and Justin Beal
Hauser & Wirth
The Horace W. Goldsmith Foundation
Irma and Norman Braman Philanthropic Fund In Honor of Mary Frank
Sunanda Kakade
Jamie Klein
Bess Landa

Denise LeFrak / Denise LeFrak Foundation
Scott Levine
Alex Lieberman
Penny and Jay Lieberman / The Derfner Foundation
Laura Lofaro Freeman and James L. Freeman
Alex Logsdail
Christina and Alan MacDonald
Martha B. McLanahan
Louis K. and Susan P. Meisel
Stephen Meringoff / Meringoff Family Foundation, Inc.
Adam Miller
Michèle and Steven Pesner
Preston T. Phillips
Andrea and Mark Picard
Mark Prussian
Public Funding Provided by Suffolk County
Ron Rabkin
Michael Racioppi
Patti and Mark Renton
May and Samuel Rudin Family Foundation, Inc.
Alexandra Stanton and Sam Natapoff
Shelley and Ira Taub
Fern and Lenard Tessler
Daniel Wainstein
Steven Wax
Karen and Barry Wolf
The Works Fund at The Chicago Community Foundation
Yieldstreet
Neda Young
Anonymous

\$10,000-\$19,999

Mary Ann Adolf
Alice + Olivia LLC
Stuart and Lara Bergen
Shelley and Michael Carr
Barbara Bertozzi Castelli
Chantecaille Cosmetics
Christie's
Debby and Michael Colacino
The Corcoran Group
The Deborah Buck Foundation
The Fairholme Foundation
Roger and Bambi Felberbaum
Elena A. Ford
GAGOSIAN
Laurie and Steve Girskey
John Haar and Cathleen Liu
Bruce C. Horten and Aaron Lieber
The John J. McDonnell Margaret T. O'Brien Foundation
JPMorgan Chase
Rachel Judlowe
Kathleen N. King
Barbara and Richard S. Lane

Thomas Lavino
Miyoung Lee and Neil Simpkins
Laurence R. Milstein
The Mimi Saltzman Family Foundation
National Endowment for the Arts
Prostate Cancer Foundation
Fiona and Eric Rudin
Patricia M. Rung
Saks Fifth Avenue
Nicole Salmasi
Donald Savelson and Jane Wesman
Michelle Side and Paul Brandt
Lynn and Stephan G. Solomon
Yanina and Allan Spivack
Elizabeth Strong-Cuevas
Rodolfo and Lydia Touzet
Tuckahoe Common School District
Leah and Michael Weisberg / Michael and Leah Weisberg Charitable Fund
Whitmores
Sophocles and Silvia Zoullas
Anonymous

\$5,000-\$9,999

Amster Foundation
Ingrid Arneberg
Shari Aronson
The Arthur Loeb Foundation
Judith Auchincloss
Michael R. Bloomberg
Carmine Boccuzzi and Bernard Lumpkin
Ellen Cantrowitz
Amy Cherry-Abitbol and Pierre Abitbol
Lillian and Joel Cohen
Mimi and Andrew Crawford
Wendy Cromwell
Nina del Rio
Mary and Aydin Erimez
Christine Ferer
The Garrett and Mary Moran Family Foundation
Gelman Family Foundation
Martha and David Hamamoto
Alexander Hankin
William T. Hillman / The William Talbott Hillman Foundation, Inc.
Caroline Hirsch and Andrew Fox
Hamilton Hoge
Sheree Hovsepian and Rashid Johnson
Merrin Jenkins
Lana Jokel and Sven Lukin
Mary Margaret J. Jones
Kate W. Cassidy Foundation
LaGuardia Design Group
Michael Lee
Monica Manzutto
Dennis and Jeanne Masel
Karen and Dennis Mehiel
Meryl Meltzer / Romenesa Foundation
Mar and William Morosse
Muriel F. Siebert Foundation

Margo M. and James L. Nederlander
The Northern Trust Company
Ariel and Alaleh Ostad
Pannonia Foundation
Elizabeth and Richard Pepperman
Peter Sayia
Lauren and Steven P. Schwartz
Michael Sfinas
Shou Sugi Ban House
Randolph C. and Deann M. Snook
Lynn and Stephan Solomon
Carol Chase Spera
The Speyer Family Foundation
James and Kelli Stanton Foundation
Suffolk County Dept. of Economic Development
Summerhill Landscapes, Inc.
Connie Tilton
LionTree
Kathy Walsh and Gene Bernstein
Mary Watriss
Leah and Michael Weisberg
Alison and Donald Weiss
Linda and Richard Willett
Anonymous
\$2,500-\$4,999
Diane and Arthur Abbey
Sara Amani and Timothy Ward, Hercules
Deborah Bancroft
Vivian and Miguel Barg
Victoria Barr
Allison and Larry Berg
John Berggruen
William L. Bernhard
Jacqueline Brody
Troy Buckner
Ann and Donald G. Calder
Christine and William Campbell
Marc Chiffert, Chiffert Architectural Engineering
Leslie Rose Close
Glori Cohen
Cuqui Cuqui
Susan and Robert Dubner
Laura Durning
Lisa and Sandford Ehrenkranz
Marie and John Evans
Annie and Michael Falk
Janet Fernandez-DiCalogero and Vinny DiCalogero
Oliver and Carole Server Frankel
Carole Greene
Hales Gallery LLC
Leila Heckman and Lowell Robinson
Herman Goldman Foundation
Anita K. Hersh, Lister Butler Consulting
Jeffrey Horne
Maryanne Horwath and Michael Shaheen
Theodora Klissas
Sarah and Sean Lambert
Lawrence and Carol Saper Foundation, Inc.
Chad A. Leat
Ashley Leeds and Christopher Harland
Antonella Lemos
Kathryn Markel
Martin D. and Jean Shafiroff Foundation

Christina and Anthony Mason
The McLean Family Foundation
John Monsky
Shanna Nasiri
Yann Nury
Piazza Horticultural
Carolyn Ramo
Random House, Inc.
Tish Rehill, Gardeneering
The Robert and Joyce Menschel Foundation
Robertson Foundation
Matthew Rosenthal
Toni Ross
Erica Samuels
Fred Schmeltzer
Samuel and Lyndley Schwab
John Seipp
Jane and Barton Shallat
Sotheby's, Inc
Stahl Family Charitable Foundation
Robert Stamen
Brown Harris Stevens
Rose Stewart-Dickson and Tyler Dickson
Rose Strickland
Amanda Taylor
Cristin Tierney
Barbara Toll / Evelyn Toll Family Foundation
Danielle and Tom Walker
Madeline Weinrib
George Wells
Jane Wesman and Donald Savelson
Nina Yankowitz and Barry Holden
Margot and Scott Ziegler

\$1,000-2,499

Anthony Addison
Michael and Suzanne Ainslie
Shazma and Aly Alibhai
Eric Altmann
Peggy Amster
Carl and Nadia Anderson
AraIys Design LA PC
Alyson and John Archer
Asaf German, PC
Lizzie Asher and Daniel Ezra
Badilla Painters
Lauriel and Roger Baker
Lisa M. Baker
Janet and James Balakian
Gerald Barad
Ann and Keith Barish
Donald Beane
Tony Bechara
Barbara and Paul Bernstein
Stephen Bernstein
Christine Berry
Tom Bloch
Jane and Richard Brickell
Derick Brown and Ronald Temple
Janna Bullock
Amanda and J. Victor Cain
Ann and Donald Calder
Maureen and James Callanan
Melissa and Clayton Calvert
Lee Carlin
Helice Carris-Bernstein
Ally Chang

Thomas K. Chu
William G. Cisneros
Angela Clofine
Anne Cohalan
Emy Cohenca
William T. Conway
Dana Cranmer
Lisa Cutler and David J. Grais
Ana R. Daniel
Thomas Davis
Debra and Thaddeus Davis
Susan and Francois de Menil
Christina and Emmanuel Di Donna
Virginia and Peter Dimsey
Ben Djaha
The Donald and Barbara Zucker Family Foundation
Dorian Goldman and Marvin Israelow
The Dorothy Babcock Family Charitable Foundation
David Downs
Saundra and David Dubin
Gillian and Josh Dubin
Tim Duggan
Edward and Marjorie Goldberger Foundation
Lisa and Sandy Ehrenkranz
Maximilian Eicke
Kevin Eilian
Diana and Frederick Elghanayan
John and Rainey D. Erwin
Wendy and Michael Esposito
Anna and Jim Fantaci
Farm Landscape Design
Cali Faulkner
Felberbaum Family Foundation
Fenelon Landscapes
Fidelity Brokerage Services LLC
Eric Finnegan and Daniel Korn
Linda and Gregory Fischbach
The Fischl Gornik Family Foundation
Carolyn Floersheimer
CJ Follini
Andrea Franchini
Judith and Herbert Freedman
Ruthie Friedlander
Nitin Gambhir
Judith Garson and Steven Rappaport
Celia Gerard
Andrea Glimcher
Sandra Gluck
Benjamin Godsill
Sara Goldfarb
Melissa Gottesman
Patti Grabel and Isidore Mayrock
Paul Grassfield
Greater Houston Community Foundation
Laura Grenning
Allen and Deborah Grubman
Martin and Audrey Gruss
Joann Hackett
Ruth Ann Harnisch
Nicholas Helfand
Henry Heuser, Jr.
Hollander Design
Karine Hollander
Ally Chang
Nadine Homann and Tarun Mehta

Logan Horne
Lucia Hwong-Gordon and Peter Gordon
Anke and J.M. Russell Jackson
Andrew Jacono
The Jeannette and H. Peter Kriendler Charitable Trust
Caroline Jones
Lynn Jones
Nina and Adrian Jones
Stephanie Joyce and Jim Vos
Linda Karofsky
Elias Kefalidis
Ellen Kern
Hans W. Kertess
Wendy Keys
Vajra Kingsley
Kleinow Family Foundation
Nancy Kolakowski
Dean Kripalani
Deepa Kumaraiah
Linda and Benjamin Lambert
Shahed Larson
Philippe Laumont
Bonnie Lautenberg
Kathy and Michael Lavyne
Abby Clough Lawless
Stephanie Brody Lederman and Gerald Lederman
Marina Leous and Joseph Badilla
Sidney and Helaine Lerner
Janice Lewart
Lightworks Landscape Lighting, Inc.
Robin L. Long, Esq. Attorney at Law
Pingree and Donald Louchheim
Bryan Ludwig
Make My Donation Inc.
Jennifer M. Maloney, Esq.
Erin Mansfield
Meredith and Serth Marks
Materassi Legal PC
Patricia Maurides and Chris Siefert
Jerri Mayer
Alexandra Mayers
Peter McCann and Deborah Berke
Elizabeth McLanahan
Lara and William McLanahan
Ven Medabalmi
Ana and Richard Meier
Galia Meiri-Stawski and Axel Stawski
Men at Work Construction
Jessica Mezzacappa
Lachlan Miles and Christopher Hill
Nicole Miller and Kim Taipale
Modern Green Home
Linda and Russell Munson
Nara Roesler Gallery
Susan and Michael Nash
Jennifer New
Norwood Foundation
Katia and Christian Oberbeck
Minya Oh
Stacy and Jonathan Paetzel
Maria Pashby
Yukari Pass
Paul Kasmin Gallery
Penguin Random House
The Penthesilea Fund, Inc.

Sara Perkins and Zahir Zaveri
Nat and Roz Perlmutter
Paul Pincus
Peggy and Peter Pressman
Lucy and Lawrence Ricciardi
Kevin Richards
Joseph Rokacz
Erik Rose
Ana Rosenstein
Ryan Ross
Amy Phillips Rotter
Roundtree Amagansett
Cynthia Rowley and Bill Powers
Laurence M. Rundie
Linda Sachs
Leila Samii
Judith Saner
Katherine Savarese
Stephanie Schmitt
Lynn Schneider
Debra and Charles Schoenau
Allison Schoenthal
Dennis Schrader and Bill Smith
Seibert & Rice, Inc.
Jean and Martin Shafiroff
Daniel C. Shedrick
Shari Siadat
Mei-Li da Silva Vint
Mary and Alok Singh
Mary K. Slattery
Annaliese Soros
Michael Southern
Joseph Spieczny
Domna Stanton
Starr Tents
Ben Stauffer
Steel Lomont Rouhani Architects
Stober Lafer Family Foundation
Gretchen and Lewis Stone
Natasha and Richard Stowe
Joachim and Maren Struengmann
Susan and Rick Sullivan
Lingchen Sun
Sunny & Abe Rosenberg Foundation, Inc.
Sayoko Teitelbaum
Christopher Thomson
Cristina Thorp
Bara Tisch
Town of Southampton
Edwina von Gal
Tracy and Gary Waleko
Cathy and James Wallick
Cristina and Jonathan Wang
Harriet and Ronald Weintraub
Nina and Gary Wexler
Sylvia Whitman
William C. Dowling, Jr. Foundation
Sheila Wolfe
Marie and Kenneth Wong
Candace Worth
Megan and Kenneth Wright
Robert Zimmerman

The Parrish is grateful for the hundreds of supporters who made gifts under \$1,000.

IN KIND

Bradford Portraits
C & G Media Group
Christine Curiale-Steinmuller
Studio of Michael De Feo
Darice and Jason Fadeyi
Hargreaves Associates
Herzog & de Meuron
I-camp
LaGuardia Design Group
Piazza Horticultural
Elsa Soyars
Twomey, Latham, Shea, Kelley, Dubin, & Quartararo, LLP
Suzanne Unrein

DONORS TO THE COLLECTION

We recognize the following donors with gratitude for their contribution of works of art to the Museum’s permanent collection.

Matthew Arnett
Estate of Mildred Brinn
Arlene Bujese
David Cancel
Kathryn C. Chenault
Sean Elwood and Yvonne Puffer
Stormy Byorum Good
Michelle Griffith
Elizabeth Hazen and Stephen Hicks
Ignivomous Inc.
Virginia Jaramillo
JPMorgan Chase
Sandy and Stephen Perl binder
Francesco Scattone and Judy Gibbons
Dean Valentine and Amy Adelson
Sara VanDerBeek
Lyn and E.T. Williams, Jr.

2021 BOARD OF TRUSTEES

Mary E. Frank, President and Co-Chair
Mark Renton, Co-Chair
Sandy Perl binder, Vice President
Timothy G. Davis, Secretary
Jay B. Goldberg, Treasurer
Deborah F. Bancroft
Sean Cohan
Samantha Brand
Preston T. Phillips
Darice Fadeyi
David M. Dubin
David Granville-Smith
Denise LeFrak
Christina MacDonald
Martha McLanahan
James L. Freeman
Michele Pesner
Frederic M. Seegal
Alexandra Stanton
Laurence Milstein
Lisa Green
Mary Margaret Jones

Museum Director: Kelly Taxter,
March 22-December 21, 2021.

FINANCIAL REVIEW

JANUARY 1, 2021–DECEMBER 31, 2021

STATEMENT OF FINANCIAL POSITION

AS OF DECEMBER 31, 2021

ASSETS

Current Assets	
Cash	\$2,292,438
Investments	\$3,176,681
Accounts receivable	\$38,743
Grants receivable	\$205,097
Contributions receivable, net, current portion	\$215,760
Prepaid expenses and other current assets	\$53,853
Inventory – Museum Shop	\$66,444
Total Current Assets	\$6,049,016
Contributions Receivable , net, noncurrent portion	\$125,403
Restricted Investments	\$3,870,229
Property and Equipment , net of accumulated depreciation of \$7,275,976 and \$6,413,116, respectively	\$32,067,841
Other Assets	\$151,082
Total Assets	\$42,263,571

LIABILITIES AND NET ASSETS

Current Liabilities:	
Notes payable, current portion	\$0
Mortgage payable, net, current portion	\$37,397
Accounts payable and accrued expenses	\$292,265
Deferred revenue	\$254,030
Total Current Liabilities	\$583,692
Mortgage Payable , noncurrent portion	\$1,389,398
Other Liabilities	\$151,082
Total Liabilities	\$2,124,172
Without donor restrictions:	
Board designated for property and equipment	\$30,641,046
Board designated for accessions	\$121,205
Undesignated	\$1,953,821
Total net assets without donor restrictions	\$32,716,072
With donor restrictions	\$7,423,327
Total net assets	\$40,139,339
Total liabilities and net assets	\$42,263,571

FINANCIAL REVIEW

STATEMENT OF FINANCIAL POSITION

AS OF DECEMBER 31, 2021

REVENUE AND SUPPORT

Contributions	\$2,528,143
Benefit events	\$1,181,210
Less direct benefits to donors	(339,258)
Tuition and fees	\$425,362
Government grants	\$1,064,038
Membership	\$239,880
Admissions	\$185,404
Museum Shop	\$106,798
Less: cost of sales	(3,706)
Investment income, net of fees	\$80,817
Unrealized gain on investments	\$240,509
Realized gain on investments	\$159,327
Other income	\$343,451
Gifts in-kind	\$88,000
Total Revenue and Support	\$6,299,975

OPERATING EXPENSES

Program services	
Curatorial	\$2,263,441
Education	\$851,139
Museum Shop	\$118,892
Total program services	\$3,233,472
Supporting services	
Administration	\$462,090
Development	\$709,845
Total supporting services	\$1,171,935
Total operating expenses	\$4,405,407
Excess of revenues and support over operating expenses	\$1,894,568

NON-OPERATING EXPENSES

Depreciation	\$862,860
Accessions of art	\$74,700
Interest expense related to deferred financing costs	\$1,166
Total non-operating expenses	\$938,726
Changes in Net Assets	\$955,842
Net Assets, beginning of year	\$39,183,557
Net Assets, end of year	\$40,139,399



PARRISH ART MUSEUM

279 Montauk Highway, Water Mill, NY 11976

parrishart.org / 631-283-2118

Address Service Requested

Non-Profit Org.
U.S. Postage
PAID
Permit No.3
Water Mill NY

2023 BOARD OF TRUSTEES

(As of March 25, 2023)

Frederic M. Seegal, Co-Chair
Alexandra Stanton, Co-Chair
Sean Cohan, Co-President
Timothy G. Davis, Co-President
Sandy Perlinder, Vice President
George Wells, Treasurer
Martha McLanahan, Secretary
Deborah F. Bancroft
David M. Dubin
David Granville-Smith
Lisa Green
Notoya Green
Ian Krawiecki Gazes
Aliya LeeKong
Marjorie H. Mayrock
Louis K. Meisel
Laurence Milstein
Henry Richardson
Mimi Ritzen Crawford
Carole Server
Yanina Spivack
Scott Ziegler

Mission Statement

Inspired by the natural setting an artistic life of Long Island's East End, the Parrish Art Museum illuminates the creative process and how art and artists transform our experiences and understanding of the world and how we live in it. The Museum fosters connections among individuals, art, and artists through care and interpretation of the collection, presentation of exhibitions, publications, educational initiatives, programs, and artists-in-residence. The Parrish is a center for cultural engagement, an inspiration and destination for the region, the nation, and the world.

The Parrish Art Museum's 2021 programs were made possible, in part, by the New York State Council on the Arts with the support of Governor Andrew Cuomo and the New York State Legislature, and by the property taxpayers from the Southampton School District and the Tuckahoe Common School District.