



## PARRISH ART MUSEUM

### ***Mel Kendrick: Seeing Things in Things***

Addison Gallery of American Art, Andover, MA, April 10–October 3, 2021

Parrish Art Museum, Water Mill, N.Y., November 6, 2022–February 19, 2023

All works by Mel Kendrick (American, born 1949)

Dimensions are given in inches; height precedes width precedes depth

1. *Behind the Cross*, 1982

Plaster, wood, ink

74 x 44 x 21

Addison Gallery of American Art, Phillips Academy



2. *Untitled*, 1982

Wood

25 ¼ x 4 ¼ x 8 ½

Courtesy the Artist



3. *Nemo*, 1983

Wood, plaster, ink

66 x 216 x 140

Courtesy the Artist



4. *Tiny Red and Blue*, 1983

Zebra wood and Japan color

10 x 4 ¾ x 3 ¾

Courtesy the Artist





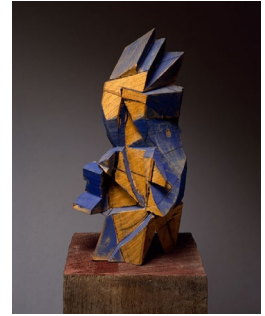
## PARRISH ART MUSEUM

5. *Blue Basswood*, 1984

Paint on basswood

20 x 9 ½ x 9

Courtesy the Artist

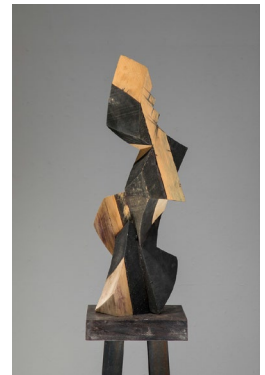


6. *Untitled (B&W Poplar)*, 1984

Poplar and pigment

27 x 12 x 9 ½

Courtesy the Artist



7. *Untitled*, 1984

Wood

18 ½ x 13 x 8

Courtesy the Artist



8. *Five Part Walnut*, 1985

Walnut

20 ¼ x 11 x 8 ¼

Courtesy the Artist





## PARRISH ART MUSEUM

9. *Small Ebony*, 1985

Ebony

20 ½ x 8 ½ x 7 ½

Courtesy the Artist



10. *Zircote and Padouk*, 1985

Zircote and padouk

19 ¼ x 13 x 8

Courtesy the Artist

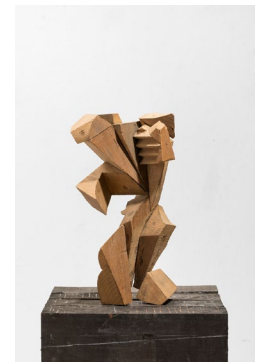


11. *Untitled*, 1985

Wood

16 ¼ x 9 x 7

Courtesy the Artist



12. *Black Walnut with Legs*, 1986

Black walnut

47 x 23 x 10

Courtesy the Artist





## PARRISH ART MUSEUM

13. *Bridge*, 1986

Zebra wood, fir, and Japan color

17 ¼ x 9.0 x 8 ½

Courtesy the Artist



14. *Red Blue Yellow*, 1986

Poplar and paint

24 x 12 x 11

Courtesy the Artist

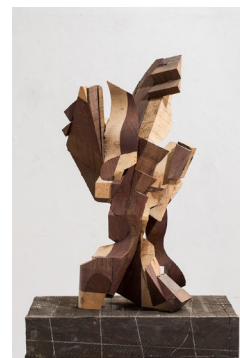


15. *Three Woods with Pencil*, 1986

Poplar, padouk and purple heart

27 x 11 ½ x 13 ½

Courtesy the Artist

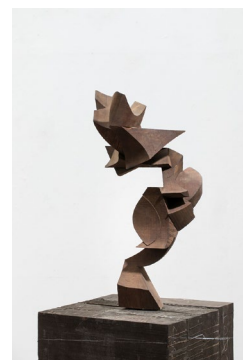


16. *Untitled*, 1986

Walnut

22 ½ x 13 x 9

Courtesy the Artist





## PARRISH ART MUSEUM

17. *Split Ebony*, 1987

Ebony

11 x 8 x 8

Courtesy the Artist



18. *Big Tree*, 1988

Cedar

Overall: 101 5/8 x 30 1/2 x 30

Whitney Museum of American Art, New York; Purchase, with funds from the Painting and Sculpture Committee 90.7a-b



19. *Black Dots*, 1988

Basswood

23 x 16 1/2 x 9

Courtesy the Artist



20. *Painted Poplar and Plywood with Bolts*, 1988

Poplar, plywood, Japan color, and bolts

144 x 60 x 60

Courtesy the Artist





## PARRISH ART MUSEUM

21. *Black Dots*, 1989–90

Basswood, glue, and lamp black

145 x 60 x 120

Courtesy the Artist



22. *Sculpture No. 2*, 1991

Poplar, oil, lamp black, pipe

113 x 48 x 55

Courtesy the Artist



23. *Sculpture No. 3*, 1991

Poplar, oil, lamp black, pipe

117 x 48 x 54

Courtesy the Artist



24. *Sculpture No. 4*, 1991

Poplar, oil, pipe, and lamp black

105 x 62 x 51

Courtesy the Artist







## PARRISH ART MUSEUM

25. *Crosswalk 1*, 1992  
Woodblock on Kozo paper  
108 x 192  
Courtesy the Artist



26. *10 Loops 1*, 1992  
Woodblock on Kozo paper  
107 x 96  
Courtesy the Artist



27. *10 Loops 2*, 1992  
woodblock on Kozo paper  
107 x 94  
Courtesy the Artist



28. *10 Loops 3*, 1992  
Woodblock print on Kozo paper, mounted on linen  
107 x 94  
Courtesy the Artist





## PARRISH ART MUSEUM

29. *10 Loops 4*, 1992  
Woodblock on Kozo paper  
107 x 94  
Courtesy the Artist



30. *Big Daddy Fun/Second Version*, 1995  
Cast rubber, wood, and pipe  
82 ½ x 77 x 49  
Courtesy the Artist



31. *Black Trunk*, 1995  
Wood and ink  
116 x 59 x 52  
Courtesy the Artist



32. *Drilled Burl/Stacked Logs*, 1995  
Cast rubber, wood, and pipe  
98 x 70 x 25  
Courtesy the Artist







## PARRISH ART MUSEUM

33. *Reverse Stump*, 1995

Wood, pipe, mending plates, and threaded rod

92 ½ x 67 x 65

Courtesy the Artist



34. *Trunk Drawing*, 1995

Woodblock print on Kozo paper, mounted on Muslin

152 x 117

Courtesy the Artist



35. *Square Cut Osage*, 1996

Cast rubber, osage, and cable ties

72 x 28 x 27

Courtesy the Artist



36. *Cast*, 2000

Plaster, steel and wood

58 x 60 x 35

Courtesy the Artist





## PARRISH ART MUSEUM

37. *Pipe Hole*, 2000

Wood, steel, rubber and ink

90 x 38 x 39

Courtesy the Artist



38. *Plug and Shell*, 2000

Wood, steel and cement

63 x 21 x 24

Courtesy the Artist

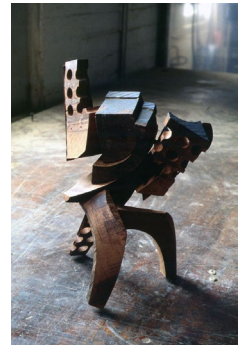


39. *Untitled*, 2000

Mahogany with lumber dye

9 ¼ x 8 x 5

Courtesy the Artist



40. *Untitled*, 2000

Mahogany with lumber dye

7 ½ x 8 x 5

Courtesy the Artist





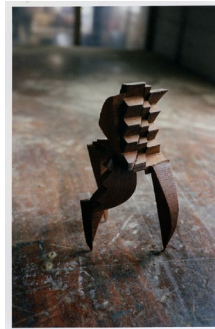
## PARRISH ART MUSEUM

41. *Untitled*, 2000

Walnut and lumber dye

7  $\frac{1}{4}$  x 4  $\frac{1}{2}$  x 3

Courtesy the Artist



42. *Untitled*, 2000

Mahogany with lumber dye

9  $\frac{1}{2}$  x 3  $\frac{3}{8}$  x 6

Courtesy the Artist

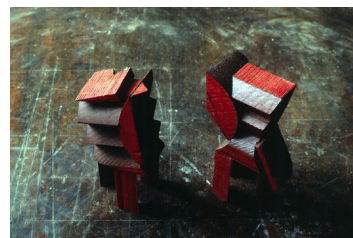


43. *Untitled*, 2000

Mahogany and Japan color

5 x 2  $\frac{1}{2}$  x 3

Courtesy the Artist



44. *Untitled*, 2000

Cast rubber and electrical tape

7 x 3  $\frac{3}{4}$  x 3  $\frac{3}{4}$

Courtesy the Artist





## PARRISH ART MUSEUM

45. *Untitled*, 2000

Wood

4 ½ x 2 x 4 ¾

Courtesy the Artist



46. *Untitled*, 2000

Wood

5 ½ x 3 ¼ x 2 ½

Courtesy the Artist



47. *7 from 7*, 2000

Wood

32 x 21 x 18

Courtesy the Artist



48. *Untitled*, 2001

Wood

9 x 5 x 5 ¾

Courtesy the Artist





## PARRISH ART MUSEUM

49. *X + Y*, 2001

Wood, wire and cable ties

12 x 35 x 24

Courtesy the Artist



50. *Untitled (Negative Object)*, 2002

Archival pigment print

Paper Dimensions: 66 x 50

Image Dimensions: 57 ¾ x 46

Edition 1 of 6

Courtesy the Artist



51. *Untitled (Negative Object)*, 2002

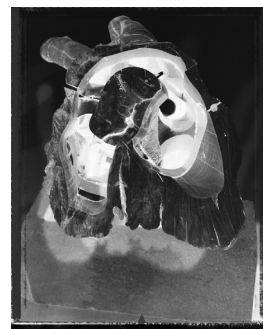
Archival pigment print

Paper Dimensions: 66 x 50

Image Dimensions: 57 ¾ x 46

Edition 1 of 6

Courtesy the Artist



52. *Untitled (Negative Object)*, 2002

Archival pigment print

Paper Dimensions: 66 x 50

Image Dimensions: 57 ¾ x 46

Edition 1 of 6

Courtesy the Artist





## PARRISH ART MUSEUM

53. *Untitled (Negative Object)*, 2002

Archival pigment print

Paper Dimensions: 66 x 50

Image Dimensions: 57  $\frac{3}{4}$  x 46

Edition 1 of 6

Courtesy the Artist



54. *Untitled (Negative Object)*, 2002

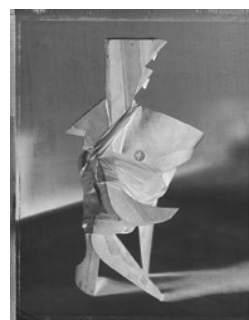
Archival pigment print

Paper Dimensions: 60 x 48

Image Dimensions: 57  $\frac{3}{4}$  x 46

Edition of 6

Courtesy the Artist



55. *Untitled*, 2002

Padouk and gesso

Each approximately 6 x 3  $\frac{1}{8}$  x 4  $\frac{1}{2}$

Courtesy the Artist



56. *Untitled*, 2002

Wood and paint

9  $\frac{1}{2}$  x 3  $\frac{3}{4}$  x 5  $\frac{1}{2}$

Courtesy the Artist







## PARRISH ART MUSEUM

57. *Untitled*, 2002

Wood and paint

9 ½ x 3 ½ x 3 ¾

Courtesy the Artist



58. *Untitled*, 2002

Wood and paint

9 ½ x 3 ½ x 3 ¾

Courtesy the Artist



59. *Untitled*, 2002

Mahogany, Japan color

11 ¾ x 6 ½ x 4

Courtesy the Artist



60. *Untitled*, 2002

Padouk and gesso

8 ¾ x 3 ½ x 4

Courtesy the Artist





## PARRISH ART MUSEUM

61. *Untitled*, 2002

Padouk and gesso

10 ½ x 4 ½ x 3 ½

Courtesy the Artist



62. *Untitled*, 2003

Mahogany and Japan color

5 ½ x 3 ½ x 4

Courtesy the Artist

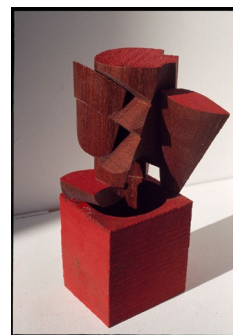


63. *Untitled*, 2003

Mahogany and Japan color

7 ½ x 3 ¼ x 4 ½

Courtesy the Artist



64. *Untitled*, 2003

Mahogany, Japan color

10 ½ x 4 x 4

Courtesy the Artist





## PARRISH ART MUSEUM

65. *Untitled*, 2003

Walnut

8 ¼ x 5 ¾ x 7 ¼

Courtesy the Artist

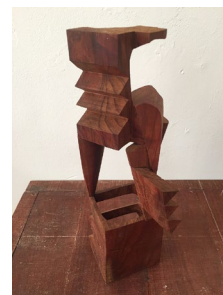


66. *Untitled*, 2003

Wood

11 x 4 ½ x 4

Courtesy the Artist

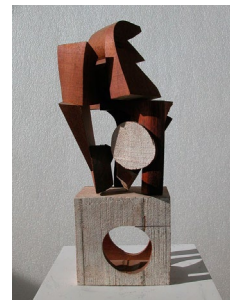


67. *White Hole*, 2003

Mahogany and gesso

12 ¼ x 5 ¼ x 5 ¼

Courtesy the Artist



68. *Untitled*, 2007

Mahogany, Japan color

32 ¼ x 12 x 13

Courtesy the Artist





## PARRISH ART MUSEUM

69. *Untitled*, 2007

Mahogany, Japan color

32 x 12 x 13

David Nolan Gallery



70. *Untitled*, 2007

Mahogany, Japan color

31 ½ x 12 x 13

Elizabeth Dunham



71. *Untitled*, 2007

Mahogany, Japan color

32 ¾ x 12.15 x 12 ¾

Courtesy the Artist



72. *Untitled*, 2007

Mahogany and Japan color

31 ¾ x 12.85 x 12.15

Carroll Dunham and Laurie Simmons, Cornwall, CT





## PARRISH ART MUSEUM

73. *Untitled*, 2007

Mahogany, Japan color

31.85 x 12.65 x 12

Courtesy the Artist



74. *Untitled*, 2007

Mahogany, Japan color

31 ½ x 12 x 13

David Nolan Gallery



75. *Untitled (Green Block)*, 2007

Wood and Japan color

68 x 25 ¼ x 25 ¼

Hall Collection

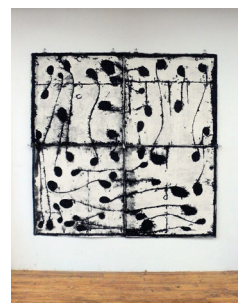


76. *Untitled*, 2008

Cast paper with pigment

80 x 80

Hall Collection





## PARRISH ART MUSEUM

77. *Untitled*, 2010

Plaster

9 ¾ x 4 ¾ x 3

Courtesy the Artist



78. *Untitled (Blk & Wht Mahogany)*, 2012

Mahogany and gesso

52 x 13 x 14

Parrish Art Museum, Water Mill, New York, Museum  
purchase with funds provided by the Collector's Circle and  
the Evelyn Toll Family Foundation



79. *Untitled*, 2013

Cast Paper

80 x 60

Courtesy the Artist



80. *Untitled*, 2013

Cast Paper

80 x 60

Courtesy the Artist







## PARRISH ART MUSEUM

81. *Untitled*, 2013

Cast Paper

80 x 60

Courtesy the Artist



82. *Double Lock*, 2015

Precast Concrete

80 x 45 x 30

Individual sections: 36 x 44 x 30

Courtesy the Artist



83. *Red Holes 2*, 2016

Mahogany and Japan color

22 ½ x 14 x 4 ½

Joseph M. Cohen Family Collection



84. *Red Holes, 4*, 2017

Mahogany and red Japan color

23 x 16 ½ x 4 ½

Base: 21 x 14 x 42

David Nolan Gallery





## PARRISH ART MUSEUM

85. *Raised Stump*, 1991–2018

Walnut, black pipe, and Japan color

103 x 47 x 35

Courtesy the Artist

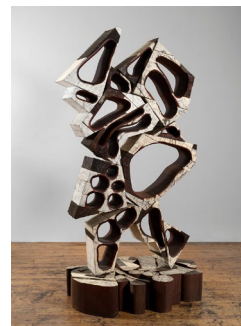


86. *L450*, 2019

Mahogany and gesso

89 x 51 x 32

Courtesy the Artist



87. *White Line*, 2019

Ebonized mahogany and EPS foam on steel and mahogany shelf

4 ½ x 108 x 7 ¾

Shelf: 2 x 108 x 7 ¾

David Nolan Gallery



88. *Second Standing Block (Black Concrete)*, 2020

Cast concrete

105 x 51 x 47

Courtesy the Artist





## PARRISH ART MUSEUM

89. *Untitled (Black Concrete)*, 2020

Cast concrete

70 x 30 x 41

Courtesy the Artist



90. *Untitled (New Work)*, 2022

Unknown medium

Unknown dimensions

Courtesy the Artist



91. *Untitled (New Large Wall Work)*, 2022

Mahogany

Approximately 16 feet long

Courtesy the Artist

