

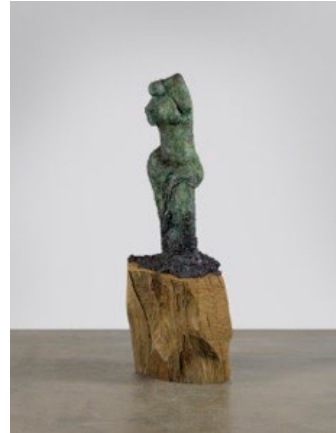


## PARRISH ART MUSEUM

### FIELD OF DREAMS

August 20, 2020–August 31, 2021

1. Jim Dine (American, born 1935)  
*The Hooligan*, 2019  
Bronze with patina  
103 x 38 x 41 inches  
Courtesy of Gray, Chicago/New York



2. Jim Dine (American, born 1935)  
*The Wheatfield (Agincourt)*, 1989–2019  
Painted bronze  
84 x 300 x 113 inches  
Courtesy of Gray, Chicago/New York



3. Max Ernst (French and American, born Germany, 1891–1976)  
*Big Brother*, 1967  
Bronze  
60 x 37 x 39 inches  
Courtesy of Kasmin Gallery, New York





## PARRISH ART MUSEUM

4. Max Ernst (French and American, born Germany, 1891–1976)  
*Grand Grenouille*, 1967  
Bronze  
50 7/8 x 32 1/4 x 30 3/4 inches  
Courtesy of Kasmin Gallery, New York



5. Max Ernst (French and American, born Germany, 1891–1976)  
*Séraphine-chérubin*, 1967  
Bronze  
79 x 30 x 31 inches  
Courtesy of Kasmin Gallery, New York



6. Max Ernst (French and American, born Germany, 1891–1976)  
*Séraphin le néophyte*, 1967  
Bronze  
78 x 29 1/2 x 29 1/2 inches  
Courtesy of Kasmin Gallery, New York





## PARRISH ART MUSEUM

7. Theaster Gates (American, born 1973)  
*Monument in Waiting*, 2020  
Granite tile and stone  
360 x 200 x 69 ½ inches  
Courtesy of Gray, Chicago/New York



8. Isa Genzken (German, born 1948)  
*Two Orchids*, 2014/2015  
384 inches each  
Cast aluminum and stainless steel, lacquer  
Collection of Glenn and Amanda  
Fuhrman, NY, Courtesy of the FLAG Art  
Foundation

\*To be installed Fall 2020



9. Roy Lichtenstein (American, 1923–1997)  
*Tokyo Brushstroke I and II*, 1994  
Fabricated 2008/2009  
Painted and fabricated aluminum  
I: 396 x 112 x 90 inches  
II: 233 ¾ x 105 x 39 inches  
Ed: AP  
Collection of Glenn and Amanda  
Fuhrman, NY, Courtesy of the FLAG Art  
Foundation





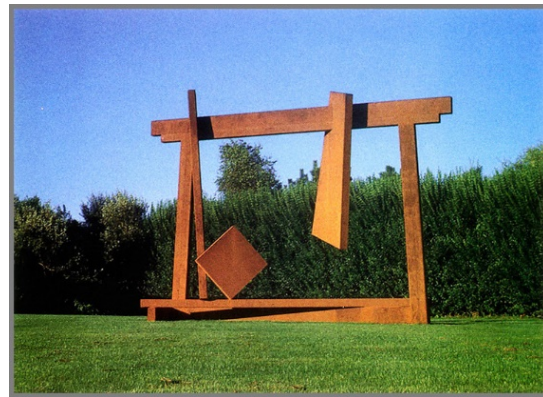
## PARRISH ART MUSEUM

10. Giuseppe Penone (Italian, born 1947)  
*Idee di pietra (Ideas of Stone)*, 2008  
Bronze, 1 granite river stone  
342 ½ x 110 ¼ x 66 15/16 inches  
Collection of Glenn and Amanda  
Fuhrman, NY, Courtesy of the FLAG Art  
Foundation

\*To be installed Fall 2020



11. Joel Perlman (American, born 1943)  
*Eastgate*, 1989  
Welded steel  
180 x 252 x 84 inches  
Courtesy of the artist and Loretta Howard  
Gallery, New York



12. Jaume Plensa (Spanish, born 1955)  
*Carlota (oak)*, 2019  
Bronze  
108 5/8 x 29 7/8 x 37 3/4 inches  
Courtesy of Gray, Chicago/New York and  
Galerie Lelong & Co., New York





## PARRISH ART MUSEUM

13. Jaime Plensa (Spanish, born 1955)

*Julia (oak)*, 2019

Bronze

107 3/8 x 28 5/8 x 30 5/8 inches

Courtesy of Gray, Chicago/New York and  
Galerie Lelong & Co., New York



14. Jaime Plensa (Spanish, born 1955)

*Laura Asia (oak)*, 2019

Bronze

111 x 47 1/8 x 34 5/8 inches

Courtesy of Gray, Chicago/New York and  
Galerie Lelong & Co., New York



15. Jaime Plensa (Spanish, born 1955)

*Wilsis (oak)*, 2019

Bronze

113 3/8 x 30 1/4 x 31 inches

Courtesy of Gray, Chicago/New York and  
Galerie Lelong & Co., New York





## PARRISH ART MUSEUM

16. Joel Shapiro (American, born 1941)  
*Untitled*, 2014  
Bronze  
120 x 100 x 50 inches  
Courtesy of the artist and Kasmin Gallery,  
New York



17. Bernar Venet (French, born 1941)  
*Arcs in Disorder: 220.5° Arc x 15*, 2006  
COR-TEN steel  
161 3/8 x 163 3/8 x 35 3/8 inches each  
Courtesy of the artist and Kasmin Gallery,  
New York

