

PARRISH ART MUSEUM

REPORT

2012–14

METRICS
NOVEMBER 10,
2012 –
DECEMBER 31,
2014

24

SPECIAL TEMPORARY EXHIBITIONS

7

MONOGRAPHS, EXHIBITION CATALOGUES, &
BOOKS ON THE PERMANENT COLLECTION PUBLISHED

6

INSTITUTIONS WORLDWIDE HOSTING
PARRISH EXHIBITIONS

27,359

VISITORS TO TRAVELING EXHIBITIONS

219

NEW ACQUISITIONS

25

EXHIBITIONS DRAWN FROM THE PERMANENT COLLECTION

149,990

VISITORS TO THE MUSEUM

349

DOCENT-LED FREE PUBLIC TOURS

185

GROUP TOURS

219

SCHOOL TOURS

Continues on p35

LETTER FROM THE DIRECTOR



Portrait: Eric Striffler

It is with pride and gratitude that the Parrish presents this report on the Museum—the first since we opened the doors to our award-winning building in November, 2012. As such, this publication is much more than an Annual Report. It is the story of the discoveries and accomplishments of the Parrish Art Museum in the 26 months from the grand opening through December 2014.

If we were to distill those experiences into one word, it would be *potential*, as manifested through our expanding collection, exhibitions, programs, educational initiatives, and ever increasing opportunities for the community to engage with art and artists. This growth was fueled by the support of our generous donors, dedicated board members, passionate staff, and enthusiastic local, regional, national, and international visitors.

The dramatic interior space has enabled us to dedicate specific galleries to special exhibitions, which have increased from three to six per year. At the same time, the Parrish has mounted three entirely new installations of selections from our permanent collection that has grown to more than 3,000 works. Between 2012 and 2014, the Museum acquired 219 paintings, sculpture, works on paper, prints, photographs, and video that have enriched not only our world-class collection, but the experience of visitors to the Museum. In addition, the Parrish has published seven monographs, books, and catalogues in the last two years—a remarkable feat for a museum of this size.

The Museum's public programs have increased from 65 in 2013 to more than 90 concerts, talks, films, and book signings in 2014. These events take place throughout the year in the many versatile spaces within the Museum—from the Lichtenstein Theater to the galleries. The Education Department expanded its initiatives with the first Artist-in-Residence program, where Steven and William Ladd worked with 1,100 children and adults.

The result of these efforts was a remarkable 149,990 visitors to the Museum from the opening through 2014. The Parrish also experienced a surge in memberships that has continued to steadily climb. The launch of two membership programs, Resident Benefits and Parrish Contemporaries Circle, created opportunities to engage two new constituencies.

With all of these accomplishments, we are in the infancy stages of fully realizing what the Parrish can be. We are gratified by all we have achieved and enthusiastic about the potential for what we have yet to discover.

Terrie Sultan
Director

Frederic M. Seegal
Chair
Board of Trustees

H. Peter Haveles, Jr.
President
Board of Trustees

EXHIBITIONS



From the grand opening of the new building in Water Mill on November 10, 2012 through December 2014, the Parrish Art Museum has presented twenty-four on- and off-site exhibitions and traveled three exhibitions organized by the Museum.

MAKING CONNECTIONS

Ross Bleckner (American, born 1949)
Architecture of the Sky, 1990
Oil on canvas
106 x 92 inches
Parrish Art Museum, Water Mill, N.Y.,
Museum purchase with funds
provided by the Parrish Art Museum
Collector's Circle



EXHIBITIONS 2014

**THE PERMANENT COLLECTION:
MAKING CONNECTIONS**
NOVEMBER 8, 2013 – NOVEMBER 7, 2014

The first reinstallation of the **Permanent Collection** was made possible, in part, by the generous support of Maren Otto, Larry Gagosian, Sally and Wynn Kramarsky, Barbara and Donald Zucker, Suzanne and Bob Cochran, James and Katherine Goodman, Mr. and Mrs. John Calicchio, The AYN Foundation, The Broad Art Foundation, and donors who wish to remain anonymous.

ARTISTS CHOOSE ARTISTS 2013
NOVEMBER 9, 2013 – JANUARY 19, 2014

Artists Choose Artists was made possible, in part, by the generous support of the Joseph and Sylvia Slifka Foundation, Linda Hackett/ CAL Foundation, the Nash Family Foundation, and Elisabeth and H. Peter Haveles, Jr. Research and development support was generously provided by The Werner and Maren Otto Fund for the Study of the Art of Eastern Long Island. Programs in support of artists living and working in the region are made possible, in part, by donors who wish to remain anonymous.

JENNIFER BARTLETT

Jennifer Bartlett (American, born 1941)
Amagansett Diptych #1, 2007–08
Oil on two canvases
108 x 216 inches
Parrish Art Museum, Water Mill, N.Y.,
Promised Gift of Michael Forman
and Jennifer Rice

STUDENT ART EXHIBITION 2014
FEBRUARY 1 – MARCH 2, 2014

The Parrish Art Museum's 2014 educational programming was supported, in part, by Fiona and Stanley Druckenmiller, the Dewitt Wallace Fund for Youth at the Long Island Community Foundation, the May and Samuel Rudin Family Foundation, Inc., JPMorgan Chase Foundation, Elisabeth and H. Peter Haveles, Jr., The John J. McDonnell Margaret T. O'Brien Foundation, and the Town of Southampton.

**JENNIFER BARTLETT:
HISTORY OF THE UNIVERSE —
WORKS 1970 – 2011**
APRIL 27 – JULY 13, 2014

Jennifer Bartlett: History of the Universe – Works 1970–2011 was made possible, in part, by the generous support of the Henry Luce Foundation, Joseph and Sylvia Slifka Foundation, Gene and Sueyun Locks, James and Lisa Cohen, Jennifer Rice and Michael Forman, Jane and Barton Shallat, Vivian Haime Barg, and the Herman Goldman Foundation.



**TOKYO BRUSHSTROKE I & II—
ROY LICHTENSTEIN, 1994**
APRIL 2014 – ONGOING

Long Term Loan by the Roy Lichtenstein Foundation. Courtesy of Glenn and Amanda Fuhrman and The Fuhrman Family Foundation, 2014. Estate of Roy Lichtenstein.

PLATFORM: MAYA LIN
JULY 4 – OCTOBER 13, 2014

Platform: Maya Lin was made possible, in part, by the generous support of the Joseph and Sylvia Slifka Foundation, Pace Gallery, New York, Linda Hackett/CAL Foundation, Debra and Leon Black, the Andrew Sabin Family Foundation, and Sandy and Stephen Perl binder.

WILLIAM GLACKENS
JULY 20 – OCTOBER 13, 2014

William Glackens was co-organized by the Nova Southeastern University Museum of Art | Fort Lauderdale, the Parrish Art Museum, and The Barnes Foundation. It was made possible, in part, by the Sansom Foundation, the Henry Luce Foundation, the National Endowment for the Arts, Christie's, Vontobel Swiss Wealth Advisors, and Funding Arts

Broward. This exhibition was supported by an indemnity from the Federal Council on the Arts and the Humanities. Presentation at the Parrish was made possible by the Sansom Foundation, Joseph and Sylvia Slifka Foundation, Elizabeth and David Granville-Smith, and Allison Morrow.

**PARRISH ROAD SHOW:
MICHAEL COMBS: OUTHOUSE 2014,
HALLOCKVILLE FARM MUSEUM,
RIVERHEAD**
AUGUST 28 – OCTOBER 13, 2014

Parrish Road Show, 2014, was made possible, in part, by the generous support of Caroline Hirsch, Sandy and Stephen Perl binder, and Robby Stein and Alexandra McNear. Public funding provided by Suffolk County.

**PARRISH ROAD SHOW:
EVAN DESMOND YEE: THE APP STORE,
GEEKHAMPTON, SAG HARBOR**
AUGUST 30 – OCTOBER 13, 2014

Parrish Road Show, 2014, was made possible, in part, by the generous support of Caroline Hirsch, Sandy and Stephen Perl binder, and Robby Stein and Alexandra McNear. Public funding provided by Suffolk County.



**OPPOSITE PAGE:
PLATFORM: MAYA LIN**

Installation view of the exhibition
Platform: Maya Lin
Parrish Art Museum, Water Mill, New York,
July 4 – October 13, 2014
In foreground, three works in marble:
Equator (2014), *Latitude New York City*
(2013) and *Arctic Circle* (2013)
On wall, *Pin River—Sandy* (2013)
Steel straight pins
Courtesy Pace Gallery, New York
Photo: Gary Mamay

**LEFT:
WILLIAM GLACKENS**

William Glackens (American, 1870–1938)
Cape Cod Pier, 1908
Oil on canvas
26 x 32 inches
Collection of Museum of Art |
Fort Lauderdale, Nova Southeastern
University, Gift of an anonymous donor

ALAN SHIELDS: IN MOTION
OCTOBER 26, 2014 – JANUARY 19, 2015

Alan Shields: In Motion was made possible, in part, by the generous support of the Joseph and Sylvia Slifka Foundation, James Keith Brown and Eric G. Diefenbach, Van Doren Waxter, Barbara Toll/The Evelyn Toll Family Foundation, Jacqueline Brody, Barbara Nessim and Jules Demchick, Cynthia Hostetler and Nicholas Ulanov, Robin and Fred Seegal, Joanne Leonhardt Cassullo/Dorothea Leonhardt Fund, Communities Foundation of Texas, Richard A. Smith, Michèle and Steven Pesner, Patricia Birch, Joa Baldinger and Heiner Friedrich, Beau R. Ott and Anna Bogatin, Max Pine, and Janet Roach.

**STEVEN AND WILLIAM LADD:
MARY QUEEN OF THE UNIVERSE**
OCTOBER 26, 2014 – JANUARY 19, 2015

Steven and William Ladd: Mary Queen of the Universe was made possible, in part, by the generous support of the Joseph and Sylvia Slifka Foundation and the May and Samuel Rudin Family Foundation. The publication was made possible by the generous support of The Mr. and Mrs. Raymond J. Horowitz Fund for Publications and William H. Wright II. Support for the *Scrollathon* and Artist-in-Residence program was provided by the National Endowment for the Arts, the New York State Council on the Arts with

the support of Governor Andrew M. Cuomo and the New York State Legislature, The DeWitt Wallace Fund for Youth at the Long Island Community Foundation, and the Henry Buhl Foundation.

**THE PERMANENT COLLECTION:
ART. ILLUMINATED.**
NOVEMBER 8, 2014 – NOVEMBER 6, 2015

The Permanent Collection: Art. Illuminated. is made possible, in part, by the generous support of Maren Otto, the Joseph and Sylvia Slifka Foundation, Suzanne and Bob Cochran, Linda and Gregory Fischbach, Christopher Harland and Ashley Leeds, Calvin Klein Family Foundation, Melva Bucksbaum and Raymond Learsy, and Galerie Lelong.

The Museum's programs are made possible, in part, by the New York State Council on the Arts with the support of Governor Andrew M. Cuomo and the New York State Legislature, and by the property taxpayers from the Southampton Union Free School District and the Tuckahoe Common School District.



EXHIBITIONS

NOVEMBER 2012 –
DECEMBER 2013

MALCOLM MORLEY:
PAINTING, PAPER, PROCESS
NOVEMBER 10, 2012 – JANUARY 13, 2013

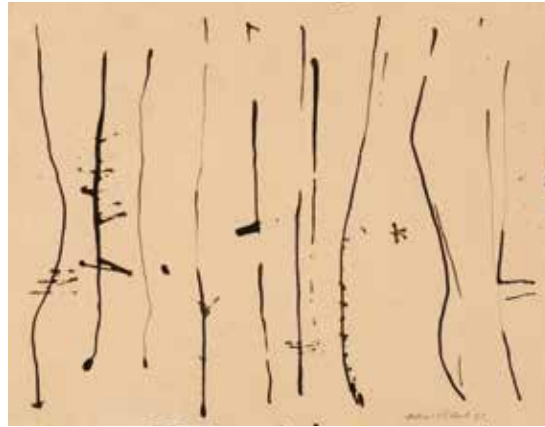
THE PERMANENT COLLECTION:
COLLECTIVE CONVERSATIONS
NOVEMBER 10, 2012 – JANUARY 13, 2013

PLATFORM: GENIUS LOCI—
INAUGURAL PLATFORM PROJECT
BY HOPE SANDROW
NOVEMBER 10, 2012 – JANUARY 31, 2013

STUDENT EXHIBITION 2013
FEBRUARY 2 – MARCH 3, 2013

THE PERMANENT COLLECTION:
FACE VALUE; LAND, SEA, SKY;
SELECTED RECENT ACQUISITIONS
MARCH 9 – APRIL 7, 2013

ALICE AYCOCK DRAWINGS:
SOME STORIES ARE WORTH
REPEATING
APRIL 21 – JULY 13, 2013



PLATFORM:
JOSEPHINE MECKSEPER
JULY 4 – OCTOBER 14, 2013

ANGELS, DEMONS, AND SAVAGES:
POLLOCK, OSSORIO, DUBUFFET
JULY 21 – OCTOBER 27, 2013

MICHELLE STUART:
DRAWN FROM NATURE
JULY 21 – OCTOBER 27, 2013

PARRISH ROAD SHOW:
SYDNEY ALBERTINI:
AND ALSO, I HAVE NO IDEA,
DUCK CREEK EDWARDS FARM,
EAST HAMPTON
AUGUST 10 – SEPTEMBER 2, 2013

PARRISH ROAD SHOW:
ALMOND ZIGMUND:
INTERRUPTIONS REPEATED,
SAG HARBOR WHALING AND
HISTORICAL MUSEUM
AUGUST 24 – SEPTEMBER 10, 2013



ABOVE, FROM LEFT:
2012 – 2013
MALCOLM MORLEY
Malcolm Morley
(American, born Great Britain, 1931)
Thor I Loading in Richard's Bay, 1998
Oil on canvas
56 x 72 inches
Parrish Art Museum, Water Mill, N.Y.,
Gift of Malcolm and Lida Morley

ANGELS, DEMONS, AND SAVAGES
Jackson Pollock (American, 1912–1956)
Untitled, 1951
Ink on Japanese paper
17½ x 22 inches
Parrish Art Museum, Water Mill, N.Y.,
Gift of Edward F. Dragon in Memory of
Alfonso Ossorio

ALICE AYCOCK DRAWINGS
Alice Aycock (American, born 1946)
The Celestial City Game, 1988
Ink and watercolor on paper
59½ x 89½ inches
Parrish Art Museum, Water Mill, N.Y.,
Gift of the Collectors' Circle

MICHELLE STUART
Michelle Stuart (American, born 1933)
*Materia Prima II (Islas Encantadas
Series), 1981*
Graphite mounted on rag paper with
gelatin silver prints
32 x 39¾ inches
Parrish Art Museum, Water Mill, N.Y.,
Gift of Jacqueline Brody



TRAVELING EXHIBITIONS

NATIONAL
ALICE AYCOCK DRAWINGS:
SOME STORIES ARE WORTH
REPEATING

Two-part exhibition
Parrish Art Museum, and Grey Art Gallery/
New York University
April–July 2013
Santa Barbara Museum of Art and the Art, Design
and Architecture Museum, UC Santa Barbara
January–April 2014

JENNIFER BARTLETT:
HISTORY OF THE UNIVERSE
Pennsylvania Academy of the Fine Arts
June–October 2013
Parrish Art Museum
April–July 2014

INTERNATIONAL
**CHUCK CLOSE: PRINTS, PROCESS
AND COLLABORATION**

Originally organized by Parrish Director Terrie Sultan during her tenure as Director of the Blaffer Art Museum, Houston, this exhibition has been hosted by nearly 20 national and international venues since 2003. Recent venues include:
Museum der Moderne, Salzburg
October 2012 – February 2013
White Cube, London
March–April 2013
Museum of Contemporary Art | Australia, Sydney
November 2014 – March 2015

ACQUISITIONS

Between January 2012 and December 2014, the Parrish Art Museum added 219 works to its permanent collection, which includes paintings, sculpture, works on paper, prints, photographs, and video. The Parrish collection is distinguished for its core works by American artists, many of whom resided or reside on the East End of Long Island.

2012

Mary Abbott (American, b. 1921), *Kenscoff Mountains*, ca. 1950. Watercolor and gouache on paper, 26 x 19 in. Gift of Dr. John E. Hunt and Carol Hunt.

Stephen Antonakos (American, b. Greece, 1926–2013), *Flor Neon*, 1967. Watercolor and pencil on paper, 13 x 21 in. Gift of Richard I. Adrian.

Tina Barney (American, b. 1945), *The Artists*, 1994. Chromogenic color print, 2/10, 51 x 64 in. Gift of Andrea Greeven Douzet.

Adam Bartos (American, b. 1953), *Islip, NY*, 2009. Pigment print, 33 x 44 in. Gift of the artist.

Adam Bartos *Greenport Yacht & Ship Building, Greenport, NY*, 2009. Pigment print, 33 x 44 in. Gift of the artist.

Adam Bartos *East Hampton, NY*, 2010. Pigment print, 33 x 44 in. Gift of the artist.

Adam Bartos *County Road 80, Southampton, NY*, 2010. Pigment print, 33 x 44 in. Gift of the artist.

Adam Bartos *Shore Drive East, Napeague, NY*, 2011. Pigment print, 44 x 33 in. Gift of the artist.

Adam Bartos *Chariots of Fire (1), Water Mill, NY*, 2011. Pigment print, 44 x 33 in. Gift of the artist.

Nell Blaine (American, 1922–1996), *Wild Rocks*, n.d. Watercolor with pastel on paper, 12 x 16 in. Gift of Richard I. Adrian.

Ross Bleckner (American, b. 1949), *Untitled* (from *America Now + Here* portfolio), 2009. C-print, 20 x 24 in. Gift of Carol and Ray Merritt.

Norman Bluhm (American, 1921–1999), *Untitled*, 1957. Oil and gouache on paper, 30 x 22 in. Gift of Richard I. Adrian.

Norman Bluhm *Untitled*, ca. 1961. Ink on paper, 14 x 11 in. Gift of Richard I. Adrian.

George Brecht (American, 1926–2008), *Untitled* (*Moore's Barn & Roof Paint*), ca. 1959. Printed paper, ink on paper and paper clip, 6 3/4 x 3 3/8 in. Gift of the Robert Rauschenberg Foundation.

James Brooks (American, 1906–1992), *Untitled*, 1964. Gouache and crayon on paper, 23 x 29 in. Gift of Richard I. Adrian.

James Brooks *Untitled*, 1953. Oil and gouache on paper, 22 1/4 x 27 3/4 in. Gift of Richard I. Adrian.

David Budnik (American, b. 1933), *Roy Lichtenstein with sons David and Mitchell*, 1964. Cibachrome print, 16 x 15 in. Gift of Jan Cowles.

Richmond Burton (American, b. 1960), *Zone*, 1995. Oil on linen, 84 x 120 in. Gift of The Broad Art Foundation.

Peter Campus (American, b. 1937), *Passage at Bellport Harbor*, 2010. High definition digital video. Dimensions variable, 25:46:06 minutes, Edition 2/3, Museum purchase, with funds provided by Parrish Art Museum Collector's Circle.

Henri Cartier-Bresson (French, 1908–2004), *Alberto Giacometti*, 1961. Gelatin silver print, 19 3/4 x 15 in. Gift of Jan Cowles.

Louisa Chase (American, b. 1951), *Yellow Spooks*, 1986. Oil on canvas, two panels, 108 x 144 in. Gift of The Broad Art Foundation.

Dan Christensen (American, 1947–2007), *Oreo*, 1990. Acrylic on canvas, 66 x 68 in. Gift of Elaine Grove Christensen.

Clegg & Guttman (Irish, b. 1957 and Israeli, b. 1957), *Untitled*, 1997. Cibachrome print, 72 1/2 x 49 1/2 in. Parrish Art Museum, Water Mill, New York, Gift of The Carol and Arthur Goldberg Collection.

Chuck Close (American, b. 1940), *Untitled*, 1978. Color lithograph, 14 x 11 in. Gift of Carol and Ray Merritt.

Chuck Close *Al Gore* (from *America Now + Here* portfolio), 2009. Gelatin silver print, AP 1/X, 20 x 24 in. Gift of Carol and Ray Merritt.

Elaine de Kooning (American, 1920–1989), *Juarez #5*, ca. 1959. Oil on paper, 22 1/4 x 30 3/8 in. Gift of Dr. John E. Hunt and Carol Hunt.

Willem de Kooning (American, b. Netherlands, 1904–1997), *Rocks and Trees*, ca. 1965. Oil and newsprint on board, 22 1/4 x 28 1/2 in. Gift of Dr. John E. Hunt and Carol Hunt.

Mark Di Suvero (American, b. 1933), *Wet Wash*, 1992–1993. Watercolor and ink on paper, 22 x 30 in. Gift of Douglas S. Cramer.

Joe Fig (American, b. 1958), *Dana Schutz #2 (Table)*, 2004. Oil on linen on board, 9 x 12 in. Gift of Rita Krauss.

Joe Fig *Michael Goldberg*, 2004. Oil on linen, 9 x 12 in. Gift of Rita Krauss.



James Brooks, *Untitled*, 1953

Perle Fine (American, 1908–1988), *Untitled (Study for Ritual)*, ca. 1960. Collage with painted paper and newsprint, 15 x 18 in. Gift of Richard I. Adrian.

Eric Fischl (American, b. 1948), *The Gang* (from *America Now + Here* portfolio), 2009. Chromogenic color print, 20 x 24 in. Gift of Carol and Ray Merritt.

Eric Fischl *Untitled (Woman in Shower)*, 1984. Oil on chromecoat paper, 3 sheets, 16 x 12 in. each. Gift of Douglas S. Cramer in honor of Dorothy Lichtenstein.

Till Freiwald (Peruvian, b. 1963), *Untitled*, 1997. Watercolor with graphite on paper, 92 x 60 in. Gift of The Carol and Arthur Goldberg Collection.

Ralph Gibson (American, b. 1939), *Architectural Detail (rooftop with ornate ironwork)*, 1980. Gelatin silver print, 28 x 15 in. Gift of Carol and Ray Merritt.

Ralph Gibson *Untitled* (from the *Black Series*), 1980. Gelatin silver print, 2/50, 47 x 35 1/2 in. Gift of Carol and Ray Merritt.

Ralph Gibson *Untitled (Antiquities man under awning)*, 1984. Gelatin silver print, 14 x 11 in. Gift of Carol and Ray Merritt.

Ralph Gibson *Tire Tread*, 2001. Gelatin silver print, 6/25, 20 x 16 in. Gift of Carol and Ray Merritt.

Ralph Gibson *Doorknob*, 2008. Gelatin silver print, 9/25, 20 x 16 in. Gift of Carol and Ray Merritt.

Ralph Gibson *Doorknob*, 2009. Gelatin silver print, 5/25, 16 x 20 in. Gift of Carol and Ray Merritt.

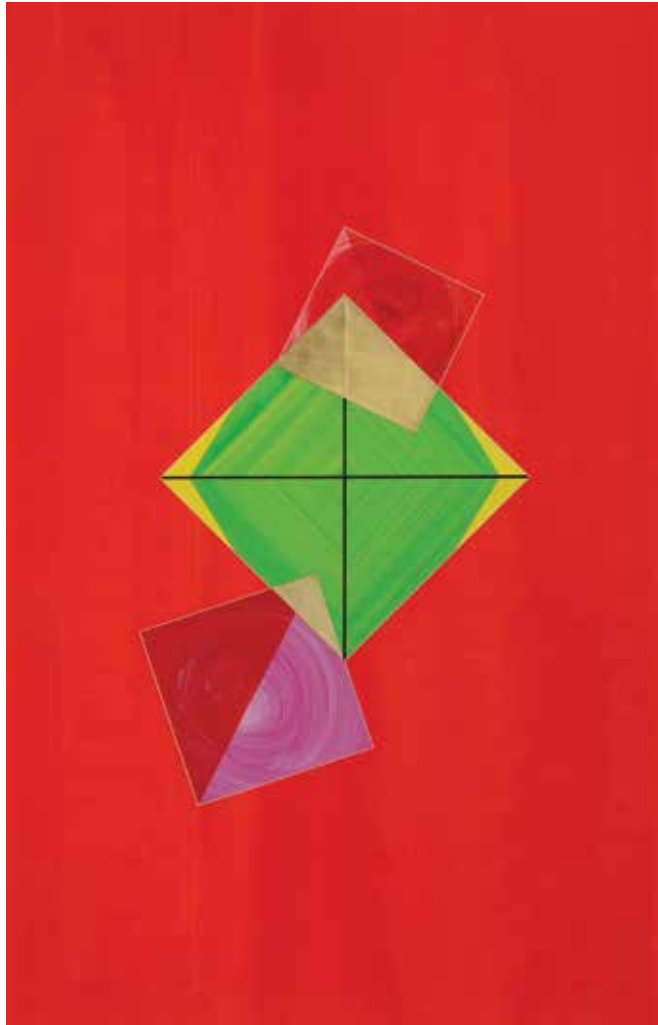
Ralph Gibson *Keyhole*, 2009. Gelatin silver print, 7/25, 20 x 16 in. Gift of Carol and Ray Merritt.

Ralph Gibson *Still Life/Shells*, 2009. Gelatin silver print, 6/25, 20 x 16 in. Gift of Carol and Ray Merritt.

Ralph Gibson *Clothespin/Rock*, 2010. Gelatin silver print, 7/25, 20 x 16 in. Gift of Carol and Ray Merritt.

Ralph Gibson *Moonscape*, 2010. Gelatin silver print, 8/25, 20 x 16 in. Gift of Carol and Ray Merritt.

Ralph Gibson *Untitled/Picket Fence* (from the *American Gothic* series), ca. 2010. Chromogenic print, 24 x 30 in. Gift of Carol and Ray Merritt.



Dorothea Rockburne, *The Cross is in the Center, Tintoretto*, 1988–1989

Ralph Gibson
Clothespin/Board, 2011.
Gelatin silver print, 6/25, 20 x 16 in.
Gift of Carol and Ray Merritt.

Ralph Gibson
Water Pail, 2011. Gelatin silver print,
4/25, 20 x 16 in. Gift of Carol and Ray
Merritt.

Michael Goldberg, (American,
1924–2007), *Untitled*, ca. 1960.
Oil and newsprint on board, 8 ½ x 8 in.
Gift of Richard I. Adrian.

Michael Goldberg
Untitled, 1962. Mixed media on paper,
19 x 24 in. Gift of Richard I. Adrian.

Michael Goldberg
Untitled, 1994. Mixed media on paper,
19 ½ x 19 ½ in. Gift of Richard I. Adrian.

Michael Goldberg
Untitled, 2001. Oil on paper,
14 ¼ x 14 in. Gift of Richard I. Adrian.

Alastair Gordon (American, b. 1952),
Untitled (Truro Beach), 2002. Ink and
gouache on handmade paper,
12 x 8 ¾ in. Gift of Richard I. Adrian.

Alastair Gordon
Amagansett–Milford, 2004–2005.
Ink on paper, 12 ¼ x 9 in.
Gift of Richard I. Adrian.

April Gornik (American, b. 1953),
Untitled, 1985. Charcoal on paper,
50 x 38 ¼ in. Gift of Douglas S. Cramer.

April Gornik
Untitled (from America Now + Here
portfolio), 2009. C-print, 20 x 24 in.
Gift of Carol and Ray Merritt.

April Gornik
Winter Light, 2009. Lithograph, 11 x 14 in.
Gift of Carol and Ray Merritt.

Robert Harms (American, b. 1962),
July, 1985. Oil on canvas, 42 x 38 in.
Gift of Richard I. Adrian.

Mary Heilmann (American, b. 1941),
Touch, 1990. Etching on handmade paper,
16 x 12 in. Gift of Richard I. Adrian.

Mary Heilmann
Valentine, 1990. Etching on handmade
paper, 16 x 12 in. Gift of Richard I. Adrian.

Hans Hofmann (American, b. Germany,
1880–1966), *Untitled (Self-Portrait)*,
n.d. Ink on paper, 11 x 8 ½ in.
Gift of Richard I. Adrian.

Bryan Hunt (American, b. 1947),
Shadow Falls, 1982. Oil with pencil on
paper, 14 ½ x 11 ¼ in.
Gift of Carol and Ray Merritt.

Bryan Hunt
Temple Ruins, 1992. Portfolio containing
4 soft ground etchings with dry point
and 3 photogravures, Crown Point Press,
San Francisco, 5/20, 5 ¼ x 6 ¼ in.
Gift of Carol and Ray Merritt.

Bryan Hunt
Veil Falls, 2005. Charcoal, acrylic wash
and oil stick on unstretched canvas,
144 x 72 in. Gift of the artist.

Valerie Jaudon (American, b. 1945),
Untitled, 1984. Watercolor on paper,
10 x 9 ½ in. Gift of Richard I. Adrian.

Bill Jensen (American, b. 1945),
Fei Fei #36, 2001. Egg and oil tempera
on paper, 21 x 51 ½ in.
Gift of Richard I. Adrian.

Ray Johnson (American, 1927–1995),
Marianne Moore's Hat, 1973.
Mixed media collage on paper, 15 x 15 in.
Gift of Richard I. Adrian.

Richard Kalina (American, b. 1945),
Fajardo, 1999. Watercolor and ink on
paper, 18 x 24 in. Gift of Richard I. Adrian.

Richard Kalina
Cremona, 2006. Watercolor and ink
on paper, 22 ½ x 30 in.
Gift of Richard I. Adrian.

Howard Kanovitz (American, 1929–2009),
Hampton's Drive-In, 1974.
Acrylic on canvas, 42 x 90 in.
Gift of the Howard Kanovitz Foundation
and Museum purchase, with funds
provided by Dorothy Lichtenstein, the
Parrish Art Museum's Collector's Circle,
and Barbara Slifka.

Mel Kendrick (American, b. 1949),
Untitled, 2012. Cast paper, 60 x 40 in.
Gift of the artist.

Harry Kramer (American, b. 1940),
Untitled, ca. 1985. Oil on paper,
22 x 30 in. Gift of Richard I. Adrian.

Harry Kramer
Belle Isle, 1987. Oil on paper,
22 ½ x 30 in. Gift of Richard I. Adrian.

Robert Kulicke (American, 1924–2007),
Single Yellow Pear with Almond, 1989.
Oil on panel, 7 ¾ x 6 in.
Gift of Richard I. Adrian.

Robert Kulicke
Red Roses and Pink Snapdragons in a
Glass Vase, 1990. Oil on panel, 8 ¼ x 10 in.
Gift of Richard I. Adrian.

Jonathan Lasker (American, b. 1948),
Untitled, 2002. Colored pencil and
India ink on paper, 30 x 22 in.
Gift of Richard I. Adrian.

Alfred Leslie (American, b. 1927),
Untitled (Frontispiece from Kenneth
Koch's 1959 portfolio of poems entitled
"Permanently"), 1961. Screenprint,
18 ½ x 14 ¾ in. Gift of Richard I. Adrian.

Roy Lichtenstein (American, 1923–1997),
Dinnerware Set, n.d. Glazed ceramic
dinnerware, four place settings
comprised of dinner plate, salad plate,
soup bowl, cup and saucer, and side
plate, Dimensions variable. Gift of the
Robert Rauschenberg Foundation.

Sheridan Lord (American, 1926–1994),
Still Life, September–May 1985 and
December–May 1986, 1985–1986.
Oil on canvas, 28 x 38 in. Gift of
Alexander Maynard and Pamela Lord.

Alen MacWeeney (American, b. Ireland,
1939), *Closed School, Vermont*, 1980.
Gelatin silver print, 8 x 10 in.
Gift of Carol and Ray Merritt.

Alen MacWeeney
Stallion, Vermont, 1980.
Gelatin silver print, 8 x 10 in.
Gift of Carol and Ray Merritt.

Alen MacWeeney
Palomino's Eye, Vermont, 1980.
Gelatin silver print, 8 x 10 in.
Gift of Carol and Ray Merritt.

Conrad Marca-Relli (American,
1913–2000), *Untitled*, 1959.
Oil on canvas collage, 17 x 18 in.
Gift of Richard I. Adrian.

Conrad Marca-Relli
Figure Form I, 1966.
Oil and collage on canvas, 38 x 45 in.
Gift of Richard I. Adrian.

Ralph Eugene Meatyard (American,
1925–1972), *Romance (N) from Ambrose*
Bierce #3, 1962. Gelatin silver print,
9/25, 12 x 12 ¼ in. Gift of Jan Cowles.

Stephen Mueller (American, 1948–2011),
Oaxaca, 2007. Watercolor on paper,
14 x 11 in. Gift of Joe Zucker.

Costantino Nivola (American, b. Sardinia,
1911–1988), *N10, Widow by Good Will*,
1981. Travertine marble, 21 ½ x 40 x 4 ½ in.
Gift of Claire A. Nivola.

Dennis Oppenheim (American,
1938–2011), *Radiant Fountain*, 2010.
Pencil, colored pencil, oil wash, oil pastel,
and spray paint on paper, 30 x 22 in.
Gift of the artist and James Salomon.

Raymond Parker (American, 1922–1990),
Untitled (#343), 1958. Oil on canvas,
61 x 50 in. Gift of Richard I. Adrian.

Raymond Parker
Untitled, ca. 1958–1965. Oil on canvas,
11 x 12 in. Gift of Richard I. Adrian.

Betty Parsons (American, 1900–1982),
The Pope, 1980. Acrylic on wood,
20 ¼ x 7 ¼ x 5 ¼ in. Gift of the
Robert Rauschenberg Foundation.

Betty Parsons
Kachina, 1981. Acrylic on wood,
35 ½ x 15 ½ x 3 ½ in. Gift of the
Robert Rauschenberg Foundation.

Betty Parsons
Pulling That Way, 1982. Acrylic on wood,
26 x 19 x 3 in. Gift of the
Robert Rauschenberg Foundation.

Ellen Phelan (American, b. 1943),
Montauk, L.I., 1981. Gouache on paper,
19 ¼ x 26 ¼ in. Gift of Barbara Toll in
honor of Trudy Kramer.

Daniel Pollera (American, b. 1953),
Approaching Winter Solstice, ca. 2000.
Oil on canvas, 20 x 24 in.
Gift of Agnes and Martin Ehrenreich.

Eliot Porter (American, 1901–1990),
Waterfall, Hagavatia, Iceland, 1972.
Color photograph, 14 x 11 in.
Gift of Carol and Ray Merritt.

Dorothea Rockburne (Canadian, b. 1932),
The Cross is in the Center, Tintoretto,
1988–1989. Watercolor and gold leaf on
prepared acetate, 93 x 59 ½ in.
Gift of Susanne Emmerich in memory of
André Emmerich.

Clifford Ross (American, b. 1952),
Baxter Road, 1991. Oil on board, 5 x 8 in.
Gift of Richard I. Adrian.

David Salle (American, b. 1952),
Costume Sketch for Molina Room, 1986.
Pencil on paper, 15 ¼ x 19 in.
Gift of Douglas S. Cramer.

David Salle
Untitled (from America Now + Here
portfolio), 2009. C-print, 20 x 24 in.
Gift of Carol and Ray Merritt.

Hope Sandrow (American, b. 1951),
Shinnecock with Susannah, September
30 3:53 P.M., The Sky is Falling, Open Air
Studio, 2008. Albumen print, 20 x 16 in.
Gift of the artist.

Hope Sandrow
Agenor, September 29 5:09 P.M., The Sky
is Falling, Open Air Studio in the study
space-time Artist Proof, 2008. Albumen
print, 20 x 16 in. Gift of the artist.

Matthew Satz (American, b. 1971),
Untitled (Smoke Painting 9.9.05), 2005.
Oil-based enamel on canvas, 14 x 11 in.
Gift of Joe Zucker.

Avigail Schimmel (Israeli, b. 1970),
Rudy Burckhardt, Spring '99, 1999.
C-print, 24 x 20 in.
Gift of Richard I. Adrian.

Alan Shields (American, 1944–2005),
My Roller Derby Queen, 1974. Screenprint
on fabric over board, 17 x 17 in.
Gift of Richard I. Adrian.

Alan Shields
The Baptismer, 1979. Acrylic and
thread on canvas, 18 ½ x 18 ½ in.
Gift of Anne and Joel Ehrenkranz.

Alan Shields
Chain Foot Plate, 1980. Acrylic and
thread with cotton twill on canvas,
31 x 31 in.
Gift of Anne and Joel Ehrenkranz.



Eric Fischl, *Untitled (Woman in Shower)*, 1984

Joan Snyder (American, b. 1940), *Art and the Nature of Grief, III*, 1992. Mixed media monoprint, 38 ½ x 26 in. Gift of Richard I. Adrian.

Joan Snyder
How Can You Make A Good Painting Drawing?, 1993. Ink, crayon, and pencil on paper, 10 ½ x 8 ½ in. Gift of Richard I. Adrian.

Theodoros Stamos (American, 1922–1997), *Untitled*, 1949. Oil on Masonite, 30 x 24 in. Gift of Richard I. Adrian.

Billy Sullivan (American, b. 1946), *Max, Sam, and Edo*, 2011. Oil on linen, 72 x 102 in. Museum purchase with funds provided by Parrish Art Museum Collector's Circle, Julie and Bobby Taubman, Julie and Jeffrey Loria, Mr. and Mrs. William A. Phillips Fund, Michèle and Steve Pesner, and partial gift of the artist.

Donald Sultan (American, b. 1957), *Lemon Nov 28, 1983*, 1983. Oil, plaster, latex paint and tar on vinyl tile mounted on four Masonite panels, 97 ¼ x 98 ½ in. Gift of The Broad Art Foundation.

Donald Sultan
Polish Landscape II Jan 5, 1990 (Auschwitz), 1990. Latex paint and tar on tile mounted on four Masonite panels, 96 x 96 in. Gift of The Broad Art Foundation.

John Torreano (American, b. 1941), *P.M.'s Mum*, 1985. Painted and incised plywood with plastic, 96 x 108 in. Gift of Harrison and Julie Augur.

Spencer Tunick (American, b. 1967), *Montauk 2*, 2009. C-print mounted on plexiglass, (AP), 40 x 50 in. Gift of the artist and James Salomon.

Esteban Vicente (American, b. Spain, 1903–2001), *#4*, 1958. Charcoal on paper, 18 x 22 ½ in. Gift of Richard I. Adrian.

Esteban Vicente
Untitled, 1959. Collage on paper, 15 ¾ x 18 in. Gift of Richard I. Adrian.

Esteban Vicente
Untitled, n.d. Collage on canvas, 12 x 20 in. Gift of Dr. John E. Hunt and Carol Hunt.

Steve Wheeler (American, 1912–1992), *Portrait of Essew*, 1947. Silkscreen on blue paper, 6 x 6 ¾ in. Gift of Richard I. Adrian.

Trevor Winkfield (British, b. 1944), *Untitled* (Cover design for John Ashbery's "Rivers and Mountains"), 1977. Acrylic on paper, 17 ¼ x 20 ¼ in. Gift of Richard I. Adrian.

Albert York (American, 1928–2009), *Three Trees in a Landscape with Water in the Foreground*, 1992. Oil on Masonite, 11 ½ x 13 ½ in. Gift of Richard I. Adrian.

Jack Youngerman (American, b. 1926), *Untitled (10)*, 1953. Oil on paper, 19 ¼ x 19 ¼ in. Gift of Richard I. Adrian.

Jack Youngerman
Conflux II, 2003. Oil on carved Baltic birch plywood, 77 x 76 x 2 ¼ in. Gift of an anonymous donor.

Jack Youngerman
Suite of 10 pencil studies related to Conflux II (2003), 2004. Colored pencil and pencil on paper, Sheets range from 9 ½ x 9 ½ in. to 11 ½ x 12 in. Gift of an anonymous donor.

Dorothea Rockburne (American, born Canada, b. 1932), *Untitled Study*, 1968. Acrylic on Masonite, 8 ¼ x 24 in. Gift of the Robert Rauschenberg Foundation.

Dorothea Rockburne
Process proof, 1968. Pencil and wax on folded paper, 27 x 32 in. Gift of the Robert Rauschenberg Foundation.

Joe Zucker (American, b. 1941), *The First Roll of 96" Wide No. 12*, 1978. Cotton, acrylic, and Rhoplex on cotton duck, 48 x 48 in. Gift of Arne and Milly Glimcher.

2013

Alice Aycock (American, b. 1946), *The Rosetta Stone City Intersected By the Celestial Alphabet*, 1985. White pencil and pastel on black paper, 60 x 85 in. Gift of Henry S. McNeil.

Ilya Bolotowsky (American, b. Russia 1907–1981), *Interlocking Reds*, 1970. Screenprint, Edition XVI/XXV, 30 x 22 in. Gift of Jack W.C. Hagstrom, M.D.

Ilya Bolotowsky
Untitled (Abstract), 1970. Screenprint, Edition 101/125, 24 x 24 in. Gift of Jack W.C. Hagstrom, M.D.

Thornton Dial (American, b. 1928), *A Lady in a Long-Necked Goose*, n.d. Watercolor and pencil on paper, 30 x 22 ¼ in. Gift of Auldlyn Higgins Williams and E.T. Williams, Jr.

Audrey Flack (American, b. 1931), *Royal Fluch*, 1977. Screenprint, 54 x 71 in. Gift of Louis K. and Susan P. Meisel.

Caio Fonseca (American, b. 1959), *Fifth Street C01.4*, 2001. Mixed media on canvas, 100 x 75 in. Gift of Jane Dresner Sadaka and Ned Sadaka.

Tara Geer (American, b. 1970), *Cantilever*, 2011. Charcoal, pastel, pencil and chalk on paper, 22 x 30 in. Museum purchase with funds provided by The Buddy Taub Foundation.

Tria Giovan (American, b. 1961), *High Tide, Winter*, 1999. Archival pigment print, 28 x 34 in. Gift of the artist.

Robert Harms (American, b. 1962), *Untitled*, 2006. Oil on canvas, 32 x 32 in. Gift of Amy Sullivan.

Mary Heilmann (American, b. 1941), *Ocean Road*, 2012. Archival pigment lithograph on rag paper, 20 x 17 in. Gift of Susan Penzner.

Valerie Jaudon (American, b. 1945), *Carrollton II*, 1979. Oil on canvas, 18 ¼ x 18 in. Gift of Britta Le Va and Joe Zucker.

Jeff Koons (American, b. 1955), *Balloon Dog (Blue)*, 2002. Metallic porcelain, 10 ½ x 10 ½ x 4 ½ in. Gift of Jared, Marina, Bettina and Bill Cisneros.

Robert Kushner (American, b. 1949), *Untitled*, 1980. Mixed media on canvas, 120 x 47 in. Gift of Britta Le Va and Joe Zucker.

Laurie Lambrecht (American, b. 1955), *Esteban Vicente*, 1990. Archival pigment print, Edition 1/12, 24 x 24 in. Gift of the artist.

Claude Lawrence (American, b. 1944), *Controversy*, 1994. Gouache on paper, 23 x 22 ¾ in. Gift of Auldlyn Higgins Williams and E.T. Williams, Jr.

Claude Lawrence
Even More, 2002. Gouache on paper, 12 x 18 in. Gift of Auldlyn Higgins Williams and E.T. Williams, Jr.

Claude Lawrence
After Hours, 2004. Gouache on paper, 12 x 18 in. Gift of Auldlyn Higgins Williams and E.T. Williams, Jr.

Donald Lipski (American, b. 1947), *Candelabracadabra No. 2*, 1990. Mixed media assemblage with candles, wood case, and leather shoes with plastic shoe forms in wax, 43 x 36 ¼ x 6 ½ in. Gift of Terri Hyland.

Susan Meisel (American, b. 1947), *Town Line Road*, 2006. Color photograph, 28 x 40 in. Gift of Louis K. and Susan P. Meisel.

Susan Meisel
Wainscott Main Beach, 2006. Color photograph, 28 x 40 in. Gift of Louis K. and Susan P. Meisel.

Betty Parsons (American, 1900–1982), *Untitled*, 1931. Watercolor on paper, 16 x 12 ¾ in. Gift of The Barnett and Annalee Newman Foundation.

Dorothea Rockburne (Canadian, b. 1932), *Egyptian Painting: Sahura*, 1980. Conté crayon, pencil, oil, and gesso on folded linen with wall drawing, 93 x 64 ¼ in. Gift of the Prop Foundation.

Ry Rocklen (American, b. 1978), *Trophy Modern*, 2013. Plastic trophy, trophy parts, and painted wood with lighting element, 10 ¾ x 9 x 6 in. Gift of an anonymous donor.



William Merritt Chase, *Self-Portrait*, 1913

2014

Billy Sullivan (American, b. 1946), *Untitled (Portrait of Britta Le Va)*, 1979. Gouache and oil stick on paper, 32 x 42 ½ in. Gift of Britta Le Va and Joe Zucker.

Donald Sultan (American, b. 1957), *Eight Poppies*, 2010. Screenprint, 20 ½ x 36 ¾ in. Gift of the artist.

Diane Tuft (American, b. 1947), *Victoria Valley, Sand Dunes*, 2013. Platinum print, 20 x 26 in. Gift of Marcia Dunn and Jonathan Sobel.

Andy Warhol (American, 1928–1987), *Little Red Book*, ca. 1970. 1 Holson photo album of 20 Polacolor Type 108 prints, 1 x 3 ½ x 5 ½ in. Gift of The Andy Warhol Foundation for the Visual Arts, Inc.

Jack Youngerman (American, b. 1926), *Untitled*, 1967. Gouache on paper, 40 x 29 ½ in. Gift of Muriel Davis.

Stephen Antonakos (American, b. Greece, 1926–2013), *Voyage*, 1999. Acrylic on Versacel, neon, 84 x 36 x 5 in. Gift of Naomi S. Antonakos.

Stephen Antonakos
#2-98, 1998. Cut paper, 23 ½ x 17 ¾ in. Gift of Jacqueline Brody.

Kaoru Arima (Japanese, b. 1969), *Empty Vessel*, 2013. Acrylic on canvas, 28 ½ x 23 ½ in. Gift of Carlo Bronzini Vender.

Jennifer Bartlett (American, b. 1941), *Elements: 4 Earth*, 1990. Pastel and pencil on paper, 31 ½ x 31 ½ in. Gift of Dorothy Lichtenstein.

Jennifer Bartlett
Elements: 4 Fire, 1990. Pastel and pencil on paper, 31 ½ x 31 ½ in. Gift of Dorothy Lichtenstein.

Ross Bleckner (American, b. 1949), *Mysticism for Beginners*, 2001. Oil on canvas, 83 x 178 in. Gift of Dana and Andrew Stone.



Bryan Hunt, *Veil Falls*, 2005

James Brooks (American, 1906–1992), *Comac*, 1960. Lithograph, 28 ¼ x 20 ¼ in. Gift of the James and Charlotte Brooks Foundation.

James Brooks *Ashawagh*, 1970. Silkscreen, 22 x 30 in. Gift of the James and Charlotte Brooks Foundation.

James Brooks *Bantam*, 1970. Lithograph, 16 ¾ x 13 ¾ in. Gift of the James and Charlotte Brooks Foundation.

James Brooks *Concord*, 1975. Lithograph, 30 x 22 in. Gift of the James and Charlotte Brooks Foundation.

James Brooks *Path*, 1977. Silkscreen, 28 ¾ x 20 ¾ in. Gift of the James and Charlotte Brooks Foundation.

James Brooks *Vernal (black)*, 1982. Lithograph, 17 ½ x 23 ¾ in. Gift of the James and Charlotte Brooks Foundation.

James Brooks *Untitled*, 1985. Silkscreen, 9 x 12 in. Gift of the James and Charlotte Brooks Foundation.

Ingrid Calame (American, b. 1956), *#161 Working Drawing*, 2004. Colored pencil on Mylar, 28 x 18 in. Gift of Carlo Bronzini Vender.

William Merritt Chase (American, 1849–1916), *Self-Portrait*, 1913. Oil on canvas, 24 ¼ x 20 ½ in. Gift of Louis Bacon.

Michael Cline (American, b. 1973), *The First Time*, 2004. Oil on linen, 14 x 20 in. Gift of Carlo Bronzini Vender.

Michael Cline *The Patriot*, 2007. Oil on linen, 25 x 25 in. Gift of Carlo Bronzini Vender.

Chuck Close (American, b. 1940), *Self-Portrait/Photogravure*, 2005. Photogravure GS 1400 print, 54 ¼ x 40 in. Gift of Paul J. Schupf Lifetime Trust, Gregory O. Koener Trustee.

Peter Coffin (American, b. 1972), *Untitled (Surrealist Frame)*, 2007. Gilded frame with wire and screw eyes, 29 x 17 x 1 ½ in. Gift of Carlo Bronzini Vender.

Robert Dash (American, 1931–2013), *Afternoon #2*, 1965. Oil on canvas, 60 x 60 in. Gift of the Madoo Conservancy.

Robert Dash *John Ashbery*, 1975. Oil on canvas, 40 x 60 in. Gift of the Madoo Conservancy.

Robert Dash *The Terrace*, 1975. Oil on canvas, 60 x 70 in. Gift of the Madoo Conservancy.

Alison Fox (American, b. 1977), *A High*, 2007. Oil on canvas, 20 x 16 in. Gift of Carlo Bronzini Vender.

Alison Fox *Mein Chinadall*, 2007. Oil on canvas, 16 x 20 in. Gift of Carlo Bronzini Vender.

Connie Fox (American, b. 1925), *City Fair*, 2011–2012. Acrylic on canvas, 20 x 20 in. Gift of the American Academy of Arts and Letters, New York; Hassam, Speicher, Betts and Symons Funds.

John M. Hall (American, b. 1952), *Montauk*, 2014. Archival pigment print, 32 x 44 in. Gift of Meryl and Robert Meltzer.

Claus Hoie (American, b. Norway, 1911–2007), *Mulford Farm and Home Sweet Home: Before the Storm*, 1998. Watercolor, 21 x 31 in. Gift of the Helen and Claus Hoie Charitable Foundation.

Bryan Hunt (American, b. 1947), *Falls with Bend*, 1979. Hard ground etching, sugar lift aquatint, soap ground aquatint and drypoint, 84 ¾ x 15 in. Gift of Mary Ryan and Bruce Lebowitz.

Bryan Hunt *Islet III*, 2000. Cast aqua-resin and iron oxide, 17 ¾ x 8 ½ x 7 in., Gift of Philippa Weismann.

Mel Kendrick (American, b. 1949), *Untitled*, 2012. Wood, Japan color, and gesso, 51 x 17 x 16 in. Museum purchase with funds provided by the Collector's Circle and the Evelyn Toll Family Foundation.

Koichiro Kurita (Japanese, b. 1946), "Dot," *San Marcos, CA*, 2005, 2006. Platinum palladium print on handmade Gampi paper, 23 x 34 in. Gift of the artist.

Ati Maier (German, b. 1962), *More*, 2004. Ink and woodstain on paper, 24 x 48 in. Gift of Carlo Bronzini Vender.

Jane Martin (American, b. 1956), *Closer Far Away*, 2005. Resin-coated photograph on wood panel, 42 x 55 in. Gift of the artist.

Dennis Oppenheim (American, 1938–2011), *Splash Building*, 2009. Galvanized steel, acrylic, cast fiberglass, globes, spheres, and plastic cable ties, 152 x 180 x 180 in. Gift of the Estate of Dennis Oppenheim.

Paul P. (Canadian, b. 1977), *Untitled*, 2003. Charcoal on paper, 10 x 7 in. Gift of Carlo Bronzini Vender.

Betty Parsons (American, 1900–1982), *Indian Acorn*, 1966. Acrylic on canvas, 68 ¼ x 41 in. Gift of the Betty Parsons Foundation.

Phillip Pearlstein (American, b. 1924), *Two Nudes on a Bamboo Recliner and Linoleum*, 1984. Pencil on paper, 30 x 40 in. Gift of Adam Lewis and Thomas K. Chu.

Sean Raspet (American, b. 1981), *No. 72*, 2008. Photograph mounted on plexiglas in mirror shadow box, 19 x 19 x 3 in. Gift of Carlo Bronzini Vender.

Ry Rocklen (American, b. 1978), *10,000 Year Wait*, 2005. Styrofoam and wine glasses, 36 x 19 x 19 in. Gift of Carlo Bronzini Vender.

Ry Rocklen *Sunday Spire*, 2008. Windssock, metal, epoxy, papier-mâché, and sand, 90 x 13 x 13 in. Gift of Carlo Bronzini Vender.

Susan Rothenberg (American, b. 1945), *Untitled*, 1987. Charcoal, oil, and pencil on paper, 43 ¾ x 30 in. Gift of Meryl and Robert Meltzer.

Alan Shields (American, 1944–2005), *Flying Rick*, 1977. Acrylic, watercolor, thread, handmade paper, and rickrack, 16 x 17 in. Gift of Douglas Baxter.

Adam Straus (American, b. 1956), *Car on Beach*, 2012. Oil on paper, 11 x 15 ¼ in. Gift of Vivian Haime Barg.

Donald Sultan (American, b. 1957), *The Cantaloupe Pickers*, 1983. Tar and plaster on vinyl composite tile on Masonite, 96 ¼ x 96 ¼ in. Gift of Loretta and Robert Lifton.

Josh Tonsfeldt (American, b. 1979), *Two Hands*, 2008. C-prints, 24 prints, 8 x 12 in. each. Gift of Carlo Bronzini Vender.

Josh Tonsfeldt *Untitled (Barn)*, 2008. HD Video, Color, 7 min., 50 sec. Gift of Carlo Bronzini Vender.

Josh Tonsfeldt *Untitled*, 2010. Alligator hide, wood, acrylic, glass, foamcore, mat board, inkjet print, and framed photograph. Dimensions variable. Gift of Carlo Bronzini Vender.

John Torreano (American, b. 1941), *Ghost Gems*, 1989. Birch plywood with gesso and sanded acrylic enamel, set of 13 elements, Dimensions variable. Gift of the artist.

John Torreano *Oxygem: Amethyst* (from the *Oxygem Series*), 1990. Color woodcut with embossing, 29 ½ x 36 in. Gift of the artist.

John Torreano *Oxygem: Emerald*, 1990. Color woodcut with embossing, 29 ½ x 36 in. Gift of the artist.

John Torreano *Oxygem: Ruby*, 1990. Color woodcut with embossing, 29 ½ x 36 in. Gift of the artist.

John Torreano *Oxygem: Sapphire*, 1990. Color woodcut with embossing, 29 ½ x 36 in. Gift of the artist.

John Torreano *Oxygem: Topaz*, 1990. Color woodcut with embossing, 29 ½ x 36 in. Gift of the artist.

Esteban Vicente (American, b. Spain, 1903–2001), *Collage #2*, 1958. Ink, paper, charcoal and pastel on paper, 20 x 24 ¾ in. Gift of Elaine Warshaw.

Esteban Vicente *No. 13*, 1960. Oil on linen, 37 x 48 ¾ in. Gift of Elaine Warshaw.

Joe Zucker (American, b. 1941), Installation of *Kite String Spider*, 1991. Felt-tipped pen and pencil on paper, 18 x 24 in. Gift of Julia Childs Augur.

Joe Zucker *Object: Wanted Poster; Subject: Jack! AKA "The Foul Web Spider,"* 1991. Felt-tipped pen on paper, 18 x 24 in. Gift of Julia Childs Augur.

Joe Zucker "Rubber Band Orb Weaver" Installation, 1991. Felt-tipped pen on paper, 18 x 24 in. Gift of Julia Childs Augur.

Joe Zucker *Spider*, 1991. Acrylic on newsprint, 13 ½ x 22 in. Gift of Julia Childs Augur.

Joe Zucker *Spider*, 1991. Acrylic on Japanese rice paper, 17 ¾ x 24 in., Gift of Julia Childs Augur.

Joe Zucker *Spider*, 1991. Acrylic and Rhoplex on Japanese rice paper, 24 x 18 in., Gift of Julia Childs Augur.

Joe Zucker *Spider*, 1991. Acrylic and Rhoplex on newsprint, 14 x 22 ¼ in., Gift of Julia Childs Augur.

Joe Zucker "Spider". *Armature #1*, 1991. Felt-tipped pen and pencil on paper, 18 ½ x 24 in. Gift of Julia Childs Augur.

Joe Zucker *Subject: Photograph of Black Widow Spider: Tarred & Feathered Outside Plant City, FLA, Sept 19, 1907*, 1991. Felt-tipped pen on paper, 24 x 18 in. Gift of Julia Childs Augur.



PechaKucha audience in the Lichtenstein Theater. Photo: Catherine Michelle Bartlett

PROGRAMS

The Parrish Art Museum is a forum for reflection, self-discovery, and transformation. Our public offerings are designed to engage the Museum's diverse audience, which ranges from full-time residents and their families to summer residents to international tourists. The Museum's programs are catalyzed by the architecture, a building designed by Herzog & de Meuron and purpose-built to reflect the many facets that make the region a gem, and the opportunities for access, exploration, and outreach this facility affords. The Lichtenstein Theater and Mildred C. Brinn Terrace, as well as the galleries, lawns, and café are all compelling venues for the Museum's full range of things to see and do.

The Museum presents multi-disciplinary lectures, concerts, films, book signings, and talks on Friday nights and some Saturdays, Sundays, and weekdays throughout the year. Many are free or modestly priced, and all provide multiple access points for the entire community. In 2014, the Museum offered more than 90 such events, providing the public with ever greater opportunities to engage directly with artists and makers in many areas through gallery talks, presentations, and off-site studio visits.

In 2014, the Parrish established Creative Collaborators—an advisory committee of East End professionals in disciplines ranging from art, music, and poetry to food, farming, and education, to help us give voice to our community. The Parrish initiated collaboration with cultural partners including the Peconic chapter of the American Association of Architects, Concert Artists Guild, Pro Musicis, Yamaha Artist Services, Bridgehampton Chamber Music Festival, Edible East End, Think Local, Ananda Wellness & Yoga Center, Peconic Land Trust, the Nature Conservancy, Stephen Petronio Company, and East End Special Players.

New initiatives in 2014 included **Brain Food** lunchtime lecture series, **Kurt Vonnegut's Galapagos**—the Museum's first live theater production—**Yoga on the Terrace**, the **Maritime Film Festival**, and the live performance/figure drawing workshop, **Gesture Jam**. The Parrish continued its popular offerings including **PechaKucha Night Hamptons**, **Jazz en Plein Air**, **Sounds of Summer**, **Architectural Sessions**, **Artist's and Curator's View**, **OLA Latino Film Festival**, **Atlantic Vibrations: Surf Movie Night**, and **Salon Series**, featuring young classical musicians performing in an intimate setting.



Above: William and Steven Ladd leading a Scrollathon workshop with students from the Bridgehampton Child Care and Recreation Center. Below: En Plein Air painting workshop for adults. Photo: Lilia May Hasiotis

EDUCATION

During 2014, the Parrish Art Museum's Education Department directly served 1,600 children and families and 900 adults in the Museum through school group visits, art camps, art workshops, and classes for adults and children. Programs included 52 open studio workshops, 17 family tours and workshops, more than 130 group and school tours, and 40 public tours. The Education Department offered year-long school art activities for over 300 students, 56 after school off-site workshops, and 18 Museum visits as part of the Parrish's community engagement initiatives. In total, Education worked with 30 regional schools and organizations, and engaged master teachers to lead art classes in a variety of media for adults.

For 60 years, the Parrish has reserved a spot in its schedule for a student exhibition. In 2014, the work of more than 1,000 young artists from private, public, parochial, and home schools was on view throughout the month of February. A special education initiative in 2014 was the **Scrollathon**, an Artist-in-Residence program from November 2014 through January 2015 with exhibiting artists Steven and William Ladd. During their exhibition **Mary Queen of the Universe**, the Ladd brothers worked with 1,100 children and adults from 16 schools and community organizations.

This unique residency—the most extensive community engagement project ever carried out by the artists or the Parrish—led to new partnerships with five schools and two community organizations.

Scrollathon participants worked with the artists in the Museum to create scrolls that were combined into a collaborative work exhibited during the **2015 Student Exhibition**. The presentation also included a monumental mural of photographs of the students, and a six-minute video documenting the residency (viewable online at <http://parrishart.org/parrish-scrollathon>). The *Scrollathon* and video were made possible, in part, through a grant from the National Endowment for the Arts.





Spring Fling 2014. Photo: Tom Fitzgerald for Society in Focus

BENEFIT EVENTS

Each year, Parrish Art Museum benefit events raise vital funds for the Museum's operating budget. In 2014, the Parrish raised a total of \$1.5 million through five events with more than 2,200 attendees.

SPRING FLING

A celebration for the Hamptons community, the 2014 **Spring Fling** welcomed 400 guests in a night of cocktails, dancing, a silent auction, and art-related activities such as a scavenger hunt throughout the galleries. Proceeds from *Spring Fling* help to support the Parrish's year-round educational outreach for children.

LANDSCAPE PLEASURES

Horticulture is a prime interest to many in the Parrish community, and **Landscape Pleasures** continues to be a popular event. The Saturday Symposium featured landscape architect Chip Callaway, renowned historian Martin Filler, and British garden designer Arne Maynard. Benefit Committee level supporters attended a private cocktail party at the home of Ala and Ralph Isham; and Sunday tours featured the gardens of Tory Burch, Joan and Bernard Carl, Perri Peltz and Eric Ruttenberg, and Margaret and R. Peter Sullivan.

THE MIDSUMMER PARTY

Inga Maren Otto and Katharina Otto-Bernstein were honored at the **Midsummer Party** for their extraordinary contributions to the Parrish and to arts and culture around the world. On July 12, nearly 600 guests attended the festive social gathering of art collectors, artists, socialites, entertainers, philanthropists, and business leaders from the Hamptons and beyond; nearly 400 additional guests attended the **After Ten Party**. Fine dining by Olivier Cheng Catering & Events, décor by Ron Wendt Design, entertainment by Coleman Music, and performance by Richard Move and MoveOpolis! contributed to the event's success.

SUMMER FAMILY PARTY

Families at this inaugural event enjoyed an afternoon of engaging activities, including art projects led by artists Billy Sullivan and Steven and William Ladd.

BY DESIGN: INNOVATORS IN ART & FASHION IN CONVERSATION

Moderated by Women's Wear Daily Editor-in-Chief Edward Nardoza, **By Design** featured a discussion with artist Ross Bleckner and renowned designer Calvin Klein.



Above: Entrance to the Museum. Photo: Matthew Barton. Below: Parrish Contemporaries Circle Members visit artist Eric Fischl's studio in Sag Harbor, N.Y.

MEMBERSHIP

Parrish Members have made the Museum a dynamic and inspiring third space between home and work or school. They form the core of the audience we serve and their growing numbers provide us with an important measure of success. In 2014, the Museum added the following two membership programs to expand the base of our supporters.

RESIDENT BENEFITS

In 2014, the Parrish created the Resident Benefits program for residents of the Southampton and Tuckahoe School Districts to expand and deepen its service to the local community. Recognizing the longstanding tradition of support approved annually by the voters of these two school districts, Resident Benefits provides participants with free admission to the Museum's galleries and to selected programs, discounted admission to workshops, and invitations to special receptions for exhibition openings throughout the year. Started in September 2014, the program had 354 members at the year's end.

PARRISH CONTEMPORARIES CIRCLE

In the fall of 2014, the Museum launched the Parrish Contemporaries Circle for art lovers between the ages of 21 and 45, providing exclusive benefits

including six art-related events and experiences throughout the year. A steering committee of nine young professionals from diverse backgrounds create events ranging from private collection and artist's studio tours to networking opportunities on the East End of Long Island and in New York City. More than 70 people attended the inaugural event, a visit to the FLAG Art Foundation in Manhattan and tour of the exhibition, *Disturbing Innocence*.

Annual Contemporaries Circle membership of \$350 supports the Museum's mission to foster connections among individuals, art, and artists. Members also receive free admission to the Parrish, discounts on programs and events, and access to over 700 museums in North America.



CAPITAL CAMPAIGN & LANDSCAPE

The Parrish Art Museum acknowledges these donors for their generous contributions to the campaign for the Museum's new home in Water Mill.

DONORS TO THE CAPITAL CAMPAIGN

\$5M +

Fiona and Stanley Druckenmiller
Norman and Liliane Peck/
The Peter Jay Sharp Foundation
Carroll Petrie Foundation

\$1M – \$4,999,999

Mildred C. Brinn
Century Arts Foundation
Lewis B. and Dorothy* Cullman
Jo Carole and Ronald S. Lauder
The Robert Lehman Foundation
Dorothy Lichtenstein
Lynne and Richard Pascualano
Fred and Robin Seegal
The Harriet and Esteban Vicente
Foundation
The Wassong Family
Susan Weber

\$500,000 – \$999,999

Gabrielle and Louis Bacon
Gale and Ira Drukier
Agnes Gund in honor of
Dorothy Lichtenstein
William T. Hillman
The Mr. and Mrs. Raymond J. Horowitz
Foundation for the Arts, Inc.
Stacey and Eric Mindich
Charlotte Moss and Barry Friedberg
Werner* and Maren Otto
Lisa and Richard Perry
Joseph and Sylvia Slifka Foundation
Meryl and Charles Witmer

\$250,000 – \$499,999

Robert Sterling Clark Foundation, Inc.
in Memory of Winslow M. Lovejoy, Jr.
The Fairholme Foundation
Mary and Frank Howard
Rachel and Jean-Pierre Lehmann
Pingree and Donald H. Louchheim
Sandy and Stephen Perl binder

\$100,000 – \$249,999

Susan and Timothy Davis
Empire State Development Corporation
Barbara White Fishman
Elizabeth and David Granville-Smith in
Memory of Frank O'Hara
Susan B. Griffin*
Linda Hackett/ CAL Foundation
Montague H. Hackett, Jr.
Elisabeth and H. Peter Haveles, Jr.
The Hearst Foundations
Robert Kissane
Stewart F. Lane and Bonnie Comley
Foundation
George P. Mills
Allison Morrow
John and Anne Mullen
Nash Family Foundation
Michèle and Steven Pesner
Douglas and Stacy Polley
The William Rosenwald Family Fund, Inc.
May and Samuel Rudin Family
Foundation, Inc.
Marcia Dunn Sobel and Jonathan Sobel

\$10,000 – \$99,999

Gillis MacGil Addison*
Anonymous
W.P. Carey Foundation
Raymond and Amy Cosman
Judy and Aaron Daniels
Beth Rudin DeWoody
Bryan Eng
Mica and Ahmet Ertegun
Linda and Gregory Fischbach
Hugh J. Freund
Etta Froio
Regina Glocker
Herrick Hardware, Inc.
Anke tom Dieck and J. M. Russell Jackson
Chad A. Leat
The Joel B. Leff Foundation, Inc.
Macquarie Group Foundation
Martha B. McLanahan
Meryl and Robert Meltzer
Garrett and Mary Moran
Mrs. Patricia S. Patterson
Rowan Family Foundation
Eric and Fiona Rudin

Katherine Rudin
William and Ophelia Rudin
Stacey Soloviev
Annaliese Soros
The Frank Stanton Family
Donald Sultan Family
Terrie Sultan and Christopher French
Megan and Kenneth Wright
Thomas and Clelia Zacharias

\$5,000 – \$9,999

Emily K. Aspinall
Vivian Haime Barg
John Bjørnen and Cee Scott Brown
Elizabeth Cowles
Jody Donohue
Susan Mead
Susan and Louis Meisel
Betty Parsons Foundation
Mary and Morley A. Quatroche, Jr.
Edwina von Gal
Jane and David Walentas
Paul Walter
Jane Wesman and Donald Savelson
Blanche Spencer Williamson in honor of
Wyndham Robertson
Janet Yaseen and The Honorable
Bruce M. Kaplan

DONORS TO THE LANDSCAPE CAMPAIGN

\$1,000 – \$4,999

The Balakian Family
Katharina Otto-Bernstein and
Nathan Bernstein
Adelaide F. Casey in memory of
Donald J. Casey
Leslie Rose Close
Douglas Davis & Rachel Littman
Rackstraw Downes
Mac K. Griswold
Bill Miller and Associates, Inc.
Pascale Sicard
Paul F. Walter in honor of Trudy Kramer
Cecile Hoge Warnock in memory of
Sarah Hoge and Francis Hoge
Mr. and Mrs. Thomas K. Wolfe, Jr.
Zygmunt and Patricia Zamoyska

GIFTS UP TO \$999

Linda Alpern
Sarah P. Bateau in honor of
Melody Tierney
Helene and Rick Begun in honor of
Jennie and Ethan Begun, and
Q. Ostendorf and Bret Begun
Glorian Berkilin in honor of
Susan Colledge
Greta and Stanley Bezubek

Suzie Blitz, Betty Birnbaum* and Family
In memory of Bill Frank from
Russell, Raul, Jon, and Daryl
Suzanne Bonser and friends in memory
of Bob Lelle
Marge Brooks in honor of
Rafaela Brooks DeMartis
Adrian Carrello in honor of John H. Drake
Katrina & Ronan Cheng-Slater
Ellen Chesler and Matthew J. Mallow
in honor of Barbaralee
Diamondstein-Spielvogel
Rosemary A. Clemens
Karen & Robert Coburn
Wilma and George Conklin, Jr.
Kevin Crean
Lori Cuisinier
Bill Curran
The Deger Family in honor of
Dr. Anthony J. Vine
Patricia Deneroff
Michael Denslow and Emily Herrick
Eric Dever
Joan and Ed DiMonda
Joanne Dinardo
Sherri Donghia and Friends in honor of
Gloria Appel
Allison Dubin in honor of
Lisa and Dan Dubin
Stuart and Lynn Epstein in honor of
Nancy Hardy and Dennis Baldwin
The Ferguson Family in honor of
Joseph Marut
Janet Fernandez and Vinny DiCalogero
in honor of Aidan and William Merritt,
and Madelyn and Sadie DiCalogero
Mark Fichandler and Paul Travis in honor
of Hal Fichandler
Alice Flynn
Denise Fogarty in honor of
Martha McLanahan
Linda Bird Francke and Harvey Loomis
Christopher French in honor of
Charles and Elizabeth French
Charles and Elizabeth French and Family
Dana Friis-Hansen and Mark Holzbach
in honor of Terrie Sultan
Palmer Gaget in honor of Robert Bailin
Walter Gallagher in honor of Alexandra
Coman and Ana Maria Coman
Margaret and Robert Galletta in honor
of Mildred Brinn
The Gardner Family in memory of
Milton and Madeleine Gardner
Mary Garthwaite in honor of Irene F.
and Walter C. Foster and in memory of
Brendan T. O'Toole
Brenda Giufurta in honor of Ben and Alec
Barrie Glabman and Adam Schwartz
Francine Gluckman
Robert Gober & Donald Moffett
Jean Lyman Goetz
Mary Goldberg
Bonnie Grice in honor of Steve Gould
Chris Griffiths in honor of Bobby Denker
The Staff of Guild Hall of East Hampton

Lynn Gumpert
Judy Hadlock in memory of
Richard Shuster
Gwendolyn, Arana, and Loren Hankin
in honor of Noel Hankin
Harmony Heights School
Paul Holschuh
Sylvia, Lukas, and Bianca Hommert
in honor of Andreas Hommert
Horizons Unlimited Landscape Design
Susan Horowitz and Rick Feldman
Arline C. Husband
Jane Iselin
Anke Jackson in honor of
Detmar tom Dieck
Mr. and Mrs. Mark Janis
Michael Jenkins and Javier Romero
Suejin Jo
Curtis Johnson and Melissa Hager
Gregory Johnston in honor of
Henry Johnston and Raphael Kustura
Bobbie Kaufman and Malcolm Dankner
Daniele Kay in honor of Michele Kay
Patti Ann Kelly in honor of Veronica and
Gene Kelly
Erin Keneally in honor of
Emmett J. Keneally
Katherine Kinkela
Lisa Kiss, Shelley Singer, Anita Hussey-
Koschat, Ylise Kessler in memory of
Mackinley Jo Sillerman
Debra Knox in honor of Michael S. Falk
and John Scibilia
Henry Koehler
Lee Ping Kwan in honor of Clarence and
Jennifer Kwan
Beth Lewis
Dr. Janice Lieberman
Ursula and George Lynch
Shirley MacKay in honor of
Margery Eaton Johnson
Cynthia and Merrill Magowan Family
in memory of Gillis MacGil Addison
Matthew J. Mallow and Ellen Chesler
Jola Ann Marcario in honor of
Jola Marcario
Diane Fisher Martinson in memory of
Gladys Fisher
Larry Mathews and Brian Saliman
in honor of Terrie Sultan
Elizabeth and Morgan McLanahan
in honor of Marty McLanahan
Lara, William, Jake, Georgia, and
Brooke McLanahan in honor of
Marty McLanahan
Martha McLanahan in memory of
Gillis MacGil Addison
Kathleen E. McNary
Spencer G. McNary*
Robin Minkoff in honor of Jimmy Minkoff,
Phyllis Minkoff, Raoul Betancourt,
and Helen Papiernick
John Molleson
Melinda Novak
Marjorie A. Ogilvie
Noreen O'Loughlin

Palatial Concrete, Ltd.
Karen and Tom Pedrazzi
Dennis Pelliccia
Loretta Pelosi in honor of
Judi Zimmerman and Marylou Simon
Barbara and Warren Phillips
Nancy Prince
Priscilla Rattazzi
Donna Ree and Fred Rodriguez
Jeanne and David Reese
Patti and Mark Renton
Eleanor Revson in honor of Mildred Brinn
Margaret Kerr Richenburg in memory of
Robert Richenburg
Richard Roberts
Jonathan Rose and Susan Malfa
Vesna Rothschild
Kate Ruggieri
Emmanuel Ruiz in honor of Mariana Ayala
Bonnie Sakoff in honor of Daniel Sakoff
Claudia Schmuckli & Matthew Drutt
Neva Setlow
Caray Slaughter in honor of
Neill Slaughter
Susan Spagna and Fred Dorfman
Andrea Spilka in honor of
Richard H. Morse
Kelly Marie Stackhouse in honor of
Douglas Polley
Stan Stokowski in honor of
George Hambrecht
Jane Stuart in honor of Mark and
Melba Stuart
Nancy Sultan in honor of Terrie Sultan
and Christopher French
Phyllis G. Sultan in honor of Terrie Sultan
and Christopher French
Terrie Sultan in honor of
Christopher French
Steven M. Sumberg in honor of
Catherine Yelloz
Angela Sun in honor of William Sun
and Ate Atema
Alan Swerdloff in honor of Douglas Polley
Wayne and Susan Swiatocha in honor of
Jillian Swiatocha and Reese Swiatocha
Carol and Joel Thea
Irene and Bill Tully
Leena Ann Uitto in memory of
Juhani A. Uitto
Edwina von Gal in honor of
Olivia Vreeland
Edwina von Gal in honor of Lou Reed
Leslie Wayne and Don Porcaro
Lauren and Andrew Weisenfeld
Kevin and Mary Willetts
The Clark Willis Fund in memory of
Constance Clark Willis
Catherine Yelloz
M. Young
Francis and Gail Zappone in honor of
the Zappone Family
Stuart Zuckerman in memory of
Jeff Anthony

* Deceased

DONOR RECOGNITION

The Parrish extends its deep appreciation to those who supported the Museum's exhibitions, programs, and education initiatives in 2014.

\$50,000+

Mrs. Veronica Atkins
Mildred C. Brinn
Beth Rudin DeWoody
Gale and Ira Drukier
Amanda and Glenn Fuhrman
Elizabeth and David Granville-Smith
Lannan Foundation
Dorothy Lichtenstein
The Lichtenstein Foundation
The Lufkin Family Foundation
Nash Family Foundation
Inga Maren Otto
Liliane and Norman Peck
Peter J. Solomon Company
Porsche Cars North America
May and Samuel Rudin Family Foundation Inc.
The Peter Jay Sharp Foundation
Jon and Mary Shirley Foundation
Barbara J. Slifka
Joseph and Sylvia Slifka Foundation
Property Tax Payers of the Southampton School District
Theory

\$20,000 – \$49,999

Andrea Rosen Gallery
Art Southampton
ArtElliman, presented by Douglas Elliman Development Marketing
Bloomberg Philanthropies
Kate W. Cassidy Foundation
Susan and Timothy G. Davis
Laura and Michael Fisch
Mary and Howard Frank
Regina Glocker
Sharon and Jay Goldberg
Montague H. Hackett, Jr.
Hampton Jitney Inc.
H. Peter Haveles Jr.
HSBC Private Bank
Chad A. Leat
The E & B McDade Living Trust
Susan and Louis Meisel
George P. Mills
National Endowment for the Arts
Mary Kathryn and Alexander Navab
New York State Council for the Arts with the support of Governor Andrew M. Cuomo and the New York State Legislature
Sandy and Stephen Perlinder
Michèle and Steven Pesner

Carroll Petrie Foundation
Douglas Polley
Rigby Asset Management
Sansom Foundation
Robin and Frederic Seegal
Maurice Sendak Foundation Inc.
Soros Fund Charitable Foundation
Alexandra Stanton and Sam Natapoff
Jay and Kelly Sugarman Foundation
Barbara Toll
The Evelyn Toll Family Foundation
The DeWitt Wallace Fund for Youth at the Long Island Community Foundation
Dan K. Wassong, in memoriam
David K. Wassong

\$10,000 – \$19,999

Lindsey and Ian Adelman
Anonymous
Banana Republic
Brown Harris Stevens
Janna Bullock
Citi Private Bank
Lillian and Joel Cohen
Lisa and James Cohen
Joseph M. Cohen
The Corcoran Group
The Fairholme Foundation
Helene and Ziel Feldman
Fiduciary Trust Company International
Barbara L. Goldsmith Foundation
Linda Hackett / CAL Foundation
Bruce C. Horten, M.D.
Tony Ingraio and Randy Kemper
Ala and Ralph Isham
Yung Hee Kim
Rachel and Jean-Pierre Lehmann
Leman Manhattan Preparatory School
Leon Levy Foundation
Sueyun Locks
Locks Foundation
The Arthur Loeb Foundation
Lole White Tour
Christina and Alan MacDonald
Jamie and David Mitchell
Margo MacNabb and James L. Nederlander
Charlene and James Nederlander
Niche Import Co.
The John J. McDonnell Margaret T. O'Brien Foundation
Pace Gallery, New York
The Avis and Bruce Richards Foundation
Andrew Sabin Family Foundation

Muriel F. Siebert Foundation
Jonathan Sobel & Marcia Dunn Foundation
Emily Hall Tremaine Foundation
Danielle and Tom Walker
Clelia and Thomas Zacharias

\$5,000 – \$9,999

Sandra and Stephen Abramson
Vivian Haime Barg
Allison and Laurence Berg
Debra and Leon Black
David Bohnett
Bridgehampton National Bank
Jacqueline Brody
James Brown and Eric Diefenbach
Bettina and Bill Cisneros
Suzanne and Bob Cochran
Amy and Ray Cosman
Joshua Easterly
Excelsior Graphics Inc.
The Gregory and Linda Fischbach Family
J.W. Heller Foundation
Herzog & de Meuron
William Talbott Hillman Foundation
Caroline Hirsch
Cynthia Hostetler and Nicholas Ulanov
Philip H. Isles
Jenny Landey Productions Inc.
Calvin Klein Family Foundation
Andrea Krantz and Harvey Sawikin
LaGuardia Design, Landscape Architects
Linda and Benjamin Lambert
Ashley Leeds and Christopher Harland
Robert Lehman Foundation Inc
Marders
Martha B. McLanahan
Allison Morrow and Jonathan Cohen
Charlotte Moss and Barry Friedberg
Susan and Charles Moss
Barbara Nessim
Pannonia Foundation
Lynne and Richard Pascualano
Lisa and Richard Perry
Prostate Cancer Foundation
Romenesa Foundation
Brooke Shields and Christopher Henchy
The Shumway Foundation
Tracy and Jay Snyder
Lynn and Stephan Solomon
James Stanton
Susan and John Steinhardt
Helene and Whitney Stevens / Fanwood Foundation
Chris Stone and David Fox
Public Funding provided by Suffolk County
Sunrise Jets
Jamie Sutherland and Ben Kraus
Property Tax Payers of the Tuckahoe Common School District
Douglas Valerio
Van Doren Waxter Gallery
Vulcan Materials Company

Jane and David Valentas
Carol and Michael Weisman
William H. Wright II
Janet Yaseen and The Honorable Bruce M. Kaplan

\$2,500 – \$4,999

Diane and Arthur Abbey
Aundrea and James Amine
Iaiela Anca
Yan Assoun
The Dorothy Babcock Family Charitable Foundation
Peggy and John Bader
Melissa Baldwin and Khedouri Ezair
Helen and Harris Barer
Edith and Keith Barish
The H.F. Boehl Charitable Trust
Garry Boxer
Geoffrey N. Bradfield
Brandhampton
Susan and Alvin Chereskin
Leslie Rose Close
Sherry and Kenneth Cohen
Custom Cool Rugs
Zita Davison
deLashmet & Associates, LLC
The Brenda Earl & Mike De Paola Foundation Inc.
Jody Donohue
Jennifer and James Esposito
Julie and Erik Falk
Joseph S. Fichera
Etta Froio
Galerie Lelong
Alexandra Garrison
F. Patricia Garrity
Bonnie and Neil Gibgot
Edward and Marjorie Goldberger Foundation
James Goldman
Herman Goldman Foundation
Goldman-Sonnenfeldt Foundation
Jamee and Peter Gregory
Lucy and Lawrence Guffey
Halstead Property
Martha and David Hamamoto
Dorian and Fotis Hasiotis
Kim Heirston and Richard Evans
Rolf Heitmeyer
Sylvia Hemingway
Howard Horowitz
Ben Hunter
Israel Discount Bank of New York
Kobra International Ltd.
Paige and Todd Kramer
The Kyser Foundation
Barbara and Richard Lane
Stewart F. Lane and Bonnie Comley
Chiswell Langhorne
Jacques Leviant
Pam and Robert Melet
Joseph Meli
Alison and Christopher Melton

Nicole Miller and Kim Taipale
Marcia and Richard Mishaan
Mary and Garrett Moran
Hallie Nath
The National Philanthropic Trust
Alexandra and Jonathan Oblak
Gayle and Frederick Pickering
Tatiana and Campion Platt
Elizabeth and Kirk Radke
Barbara A. Reuter and William J. Williams, Jr.
Toni Ross
Michael A. Rubenstein
Mary Ryan and Bruce Lebowitz
Marie and William Samuels
Helen Lee Schifter and Timothy Schifter
Fred Schmeltzer
Jean and Martin D. Shafiroff
Jane and Barton Shallat
Randi and Boaz Sidikaro
Ramona Singer
Barbara and Randall Smith
Richard A. Smith
Marsha Soffer
Donna Anne and Richard Soloway
Annaliese Soros
Kimberly and Jason Spacek
Carol Chase Spera
John and Susan Steinhardt
Robin Swid and Mark Riebling
Tate's Bake Shop, LLC
Judith Taubman
Fern and Lenard Tessler
Miklos Vasarhelyi
Wells Fargo Home Mortgage
Joanna Wölffer and Max Rohn
Margot and Scott Ziegler

\$1,000 – \$2,499

Emilyann and David Abraham
Nina and Peder Anker
Ed Annunziato
Joa Baldinger and Heiner Friedrich
Deborah F. Bancroft
Gabriela and Robert Baron
June Leven Barth
Paul Batista
Barbara and Steven Baum
Douglas Baxter
Kristin and Peter Becker
Patricia Birch Becker and A. William J. Becker, III
Zenyth and Albert Behler
Madeleine Bennett
Renee Berger
Bill Miller & Associates Inc.
Haley and Jason Binn
John Bjørn and Cee Scott Brown
Bjørn Design Inc.
Ann and Declan Blackmore
Elizabeth Bock
Clare and James Bradshaw
Melanie Brandman
Louise T. Braver
Jane and Richard Brickell
Jill Brienza
Leslie Gittess Brodsky
Melva Bucksbaum and Raymond Leary
Ann and Donald G. Calder
Maureen and James Callanan
Ellen Cantrowitz
Jonathan Capehart
Lydia and Mats Carlston
Ann Marie Carr
Colleen Casey
Andrew Catapano
Susan Chalom
Christopherson Development Corp.
Sheri and Henry Chromow
Thomas K. Chu and Adam Lewis
Ben Colice
Communities Foundation of Texas
Michael Conroy
Samantha and Alexander Cooper
Oxana and Zachary Crawford
Cunningham Agency, a division of Dayton Ritz & Osborne
Urvi Dalal
Anne Dayton
Christina De Marval
Peter DeWitt
Cynthia and Frederick Eaton
Lisa and Sandy Ehrenkrantz
Jennifer Errico
Wendy and Michael Esposito
Marie and John Evans
Anna and Jim Fantaci
Bambi and Roger Felberbaum
Mark Fichandler and Paul Travis
Fitz & Co
Olamaie Fojtasek
Judith and Herbert Freedman
Gallagher Bassett Services Inc.
Judith Garson and Steven Rappaport
Lauren Schor Geller
Jody Gilardi and Daniel Simon
Bob & Eileen Gilman Family Foundation
Madelynn Gingold and Ralph Appelbaum
Andrea Glimcher
Kerry and Daniel Golden
Dana Golding and Richard Scharf
Dorian Goldman and Marvin Israelow
Lucia Hwong-Gordon and Peter Gordon
Patti Grabel and Isidore Mayrock
Notoya Green and Fred Mwangaguhunga
John L. Griffin
Joanna and Carlo Grossman
Audrey and Martin Gruss
Agnes Gund
Nancy Hardy and Dennis Baldwin
Emerson Head
Virginia Hill and Edward Daisey
Helen and Claus Hoie Charitable Foundation
Steven L. Holley and John W. Hamilton IV
Joan and George Hornig
Horton Realty Advisors
Maryanne Horwath and Michael Shaheen
Scott Howe and Mark Watson
Claudia and John Hunt

Lisa and Donald Jackson
Eric Javits, Jr.
Jen Going Interiors
Joyce and Mohan Jethwani
Nina and Bill Judson
Kathryn Markel Fine Arts
Frances R. Katz
Mariana and George Kaufman
Kenkeleba House Inc.
Sharon E. Kerr
Hans Kertess
Belinda Kielland
Joanne and Fred Klein
Kleinow Family Foundation
Bernd and Ellie Knobloch
Julia and William Kohane
Stacey and Kevin Kotler
Laura Lando and Richard Salomon
Aurelia Larson
Kate Lavin
Helaine and Sidney Lerner
Marie and Harley Lippman
Lister Butler Consulting, Anita K. Hersh
Rachel Littman and Douglas Davis
LJ Cross
Scott Lynn
Debbie Ma and Walter Gezari
Mahoney Associates Inc.
The Marber Family
Marshall Fine Arts, LTD
Shelley and Brian McCarthy
Susan Mead
Valentina Mele
Meryl and Robert Meltzer
Lisa and Paul Metselaar
Alix Michel
Claire Montgomery and James MacGregor
Alexandra Munroe and Robert Rosenkranz
James Nadin
Ann Gage-Nardoza and Edward Nardoza
Susan and Michael Nash
Nest Seekers International
The Neuwirth Foundation Inc.
Satoko Miyake Nir and Aaron Nir
Yelena Norasteh
Dara and Tim O'Hara
Elizabeth Papadopoulos and John Sills
Seifali Patel and Neil Shah
Susan Penzner
Elizabeth and Richard Pepperman
Phillips
Ana and Henry Pincus
Press News Group
Peggy and Peter Pressman
Kathy and Othon Prounis
Quogue Gallery
Rechler Equity Partners
Redel Foundation Inc.
The Honorable Felix Rohatyn and
Mrs. Elizabeth Rohatyn
Ron Wendt Design
Carole and Alex Rosenberg
Carolyn and Kevin Ryan
Aisha and Paul Salmon
The Richard Salomon Family
Foundation Inc.

Dorianne and David Samuels
Sheri Cyd Sandler
Judith Saner
Dennis Schrader and Bill Smith
Schwartz & Sinski P.C.
Samuel W. Seymour and
Karen Patton Seymour
Olivia Shandora-Star and
Eugene Shekhter
Kelly and Dean Silvera
Madelyn Simon and Steven Sanders
Peter and Susan Solomon
Sheri and James Spitzer
Galia Meiri-Stawski and Axel Stawski
Stelle Lomont Rouhani Architects
Margaret Stevenson
Susan and Rick Sullivan
Terrie Sultan and Christopher French
Nan and Stephen Swid
Tellus Abstract Inc.
Town of Southampton
Edwina von Gal
Jeanette Sarkisian Wagner and
Paul A. Wagner
Susan and Harry Wagner
Cathy and James Wallick
Ellen and Maribeth Welsh
Jane Wesman and Donald Savelson
Westhampton Architectural Glass Inc.
Darin G. Wiggins, M.D.
Sheila and Tom Wolfe
Megan and Kenneth Wright
Barbara and Mark Zand
Bettina Zilkha
Robert Zimmerman
Marjorie and C. Barry Zolot
Barbara and Donald Zucker

\$250 – \$999

A.K. Prakash & Associates
Amy Cherry-Abitbol and Pierre Abitbol
Mona Aboelnaga and Sabi Kanaan
Jared Abrams
Leland Abrams
Virginia and Mark Abrams
Hilary and Joseph Adams
Nancy and David Adams
Richard I. Adrian
Barbara Ainsley
Ellen Albert and David Grigg
Michael Alfieri
All American Tours
All Hampton Management
Robert Allard
Kenneth Allen
Eric Altmann
Jon Ambrose and James Brasher
Americana Mortgage Group Inc.
Ammirati
Stefan Amrally
Peggy and Arnold Amster
Brenda and Kelley Anderson
Anonymous
Rina and Takis Anoussis

Christine and Max Ansbacher
Carol and Joseph Appendi
Araiy Design LA PC
Atlantic Coast Embroidery &
Screenprinting
Isabelle Autones and Francis Greenburger
Kathlene Babros
Robin and Charles Bach
Danielle Bajakian and Robert Lookstein
Christina Baltz
Nazy Banaie
Sarah Barea
Renee Baritz
Frances and Edward Barlow
Brett Barna
Merrill and Steven Barnett
Gabriela and Robert Baron
Suzanne Barth
Elisabetta Bartoloni
Joel, Lisa, Max and Theo Bass
Jill and James Bauer
Beau Hulse Realty Group Inc.
Arthur Beckenstein and John O'Rourke
Elisabeth Beierle
Belvedere Property Management, LLC
Scott Benaglio
Stacey Bendet Eisner
Mary Anne and Harvey Bennett
Clover Bergmann
Jem Berke
Berkshire Taconic Community
Foundation
Carol and Walter Berman
Barbara and Paul Bernstein
Lukie and Harvey Bernstein
Tamara and Bradford Bernstein
Patty and Eugene T. Bigelow
Cathleen Black and Thomas Harvey
Mary and Robert Blake
Patricia and Orest Bliss
Gilda and Henry Block
Mirjana Blokhar
Franklin Bober
Carolyn and Richard Boehning
Barbara Borg
Jean R. Bower
Eileen and Adam Boxer
Diem Boyd
Karen Boyer
Nadine Brandes
Linda and James Brandi
Marcy Braun
Marisa Brazzo
Bridgelynn Inn & Restaurant
Gabrielle Brooks and James DeMartis
Lance Brown
Lori Buchbinder and Raymond McDaniel
Merle and Garry Buff
Jane and George Bunn
Lynn Buoniconti
Burchfield-Penny Art Center
Deborah Burden
Katherine and Ethan Burke
Elaine and Joseph Cacarillo
Claudia Camozzi and Terry Kemper
David Campbell

Laurie Campbell
June and Robert Cantwell, Jr.
Jackie Carter
Kari Catalano and Peter Emerson
Courtney Cesario
Channing Daughters Winery
Ishwara and Jason Chrein
Christie Hansen Interiors Inc.
Chuck Close
Mary Lou Cohalan
David C. Cohen
Elinor W. Cohen and Martin Greitzer
Patti Cohen
Rossa W. Cole
Lori Conkling
William N. Cople, III
Cynthia Corbett
Jackie Corso
Giovanni Corteo
Holly Costaregni
County Energy Controls
Janis Cravens
Peter Cruncota
Anne Curtin and Tom Brandenburger
dale cohen designstudio
Barbara Daniel
Meegan and James Darby
Judith Darr
Olivia Dartley
Gregory Davis, DMD
Myrna and Paul Davis
Monica de Hellerman and
Milan Potmesil, M.D.
Melissa Dedovich and Samuel Coleman
Jenice Delano
Tracy and Patrick Delorio
Maria and Daniel del Rio
Lisette and Peter DeLuca
Thomas DeMayo, Esq.
Michael and Carol DeVito
Sarah Diehl
James S. Dineen
Barbara and Cleveland Dodge
Dolliver Land Surveying, PC
Claudia D'Ortenzio
Olivia Douglas and Rafe DiDomenico
Douglas Elliman Real Estate
Lacy Doyle
Benjamin Draper
The Drawing Room
Chloe Drew and Godfrey Gill
Francesca Dricot and Michael Figliolia
Allison Dubin
Elissa and Daniel Dubin
Tiffany Dubin
Susan and Robert Dubner
Francisco Duque and Rodrigo Trussardi
Eastern Long Island Surgery
Mary Ann Eddy
Susan and David Edelstein
Genie and James Egerton-Warburton
Diana and Frederick Elghanayan
Peggy and Mark Ellis
Stephen Elrod
Jeff Elson
Diane Englander and Mark Underberg

Gwendolyn and Raymond Enstine
Don Epstein
Elliot R. Epstein
Ernest Schieferstein Architect
Rainey and John Erwin
Darice Fadeyi
Whitney Fairchild
Alexandra Fairweather
Angelique and Dow Famulak
Farrell Fritz, PC
Amanda and Theodore Farris
Eva Faye and Abby Terkuhle
Michael Feder
DeeAnn Federico
Fellingham's Restaurant
Susan and Steven Felsher
Richard S. Fernan, Esq.
FI Computing
First Coastal Corp.
Harry Fischman
Cathleen and Joseph Fisher
Fishers Home Furnishings
Karen and Evan Flatow
Abigail and Bill Fleming
Augusta and T. John Folks
Frank Folz
Susan and Wilford Forbush
Colin Ford
Jonathan S. Foster
Paul and Diana Frank
Warren Frank and Maxine Chrein
Linda Frankenbach and Rik Kranenburg
Victoria Frazer
Devon Fredericks
Francesca and Michael Freedman
Sacha Freemon and Howard Chalfin
Teri Friedman and Bo Yaghmaie
Claudette Gabriel and Peter Trapp
Dolores and Thomas Gahan
Pat and Peter Gall
Laura and John Gallo
Raman Gambhir
Gardeneering Inc.
E. Maxwell and Aileen Geddes
GeekHampton
Nancy Gendimenico and Peter Conrad
Audrey Gennes
Brigitte Gerney
Gayle and Mel Gerstein
Nora Gharib
Eleni and Randall Gianopoulos
Dan Giles
William Gilmartin
Joan and Frank Ginsberg
Barrie Glabman and Adam Schwartz
Cindy Farkas Glanzrock
GLS Interior Design and Decoration
Stacey and Robert Goergen
Mary Cirillo-Goldberg and Mary Goldberg
Suzanne and John Golden
David and Linda Goldstein
April Gonzales
Barbara and Henry Gooss
Susan Gosin and Richard Barrett
Jane Mack Gould
Catherine Grant and David Schieldrop

Maria Gray and Sharon Gray
Charles Greef and Shawn Lech
Marcia Greenberg
Greg Miller Studio
Grenning Gallery Inc.
Natalia Gribas
Mary Griffo and Brian O'Leary
Brenda and Robert Grosbard
Christine Grout
Joan and Jon Gruen
Carole and Fred Guest
Susan Gullia
Susan and Larry Haag
Joann Hackett
Katharine Holabird Haggag and
Michael Haggag
Hallockville Museum Farm
Amy and Douglas Halsey
Hampton Bays Liquors
Hampton Copy
Hampton Dental Group, PC
HamptonsArtHub.com
Deborah and Noel Hare
George W. Harris Foundation
Judy Harris
Karla and Peter Harwich
Melissa and Carney Hawks
Janice Hayden
Lillian Heidenberg
Kathryn and Ken Henderson
Sara Herbert-Galloway and
Barry Klarberg
Herrick Hardware Inc.
Henry Heuser, Jr.
Hildreth's Home Goods
Leslie and Lawrence Hillel
Matthew Himler
Betsy and Michael Hitzmann
Zoe Hoare
Hamilton Hoge
Homenature
Homes of the Hamptons,
Homes of the North Fork
Leslie and L. Stoddard Horn
Joanne and Alanson Houghton
Susan Hovdesven and Matthew Miller
Carol and John Hunt
Anne Huntington
Patricia Hynes and Roy Reardon
Jane Iselin and Lois Thornton
Annemarie Iverson and
Robert de Rothschild
Jack Shainman Gallery
James Darby Masonry
Anne Jameson and Jay Eisenhofer
Jane Wesman Public Relations Inc.
Donna and Carroll Janis
Janney Montgomery Scott, LLC
Jocelyn Javits
Joe's Garage
Polly Johnson
Andrea and Ira Jolles
George A. Jones
Kevin Jovanovic
Helen and Stephen Judlowe
Jan G. Juran

Bena and Charles Kallick
 Mariam and Morid Kamshad
 Alexandra and Randall Kane
 Mara Kaouzova
 Justine and Eugene Kaplan
 Noreen and Peter Kaye
 Kevin Maple Salon
 Jan Klein and Jason Poremba
 Lisa Ann and Charles Kleinow
 Raya Keis Knight and Clifton Knight
 Anita and Ira Kornbluth
 Linda Kouzoujian
 Carl Krass
 Kate Krone and Adrian Bartos
 Daniela Kronemeyer
 Alex Kuczynski and Charles Stevenson, Jr.
 John and Carol Laffey
 Maria Laggis and Mauricio Lima
 Landis Refining Company Inc.
 Landscape Details Inc.
 Sarah T. Latham and Richard Kearns
 Afschineh Latifi and Keyvan Kazemi
 Laura White Realty
 Rebecca and Christopher Lawton Flatters
 Elizabeth A. Lear
 Carol Lederman
 Eleanor Lemak
 Tamara and Joshua Leuchtenburg
 Kristina and Bruce Lewin
 Margie Becker-Lewin and John Lewin
 Jerome Lewine
 Anik Libby
 Barbara and Robert Liberman
 Lifestyle
 Susan K. Lipp
 Sheila and Harold Litvak
 Maria-Luisa and Larry Loeb
 Nick Loeb
 NancyJane and Jeffrey Loewy
 Anne and Michael Loftus
 Michael Lomont
 Robin L. Long, Esq.
 Deborah and Deborah Lorich
 Kristine and Robert Lupi
 Lynch's Garden Center
 Michael K. Lyons
 Gina Ma and Chris Blum
 Susan Macgregor-Scott
 Andrea Madaio
 John Madden
 Teresa and Francis Maglio
 Carol Mandel and Vincent Covello
 Barbara and Alan Mandelbaum
 Lois Mander and Max Pine
 Beth and Marc Marano
 Rosemary Marchewka
 Iris Marden
 Gina and Kenneth Marinelli
 Joy and Alan Marks
 Erica and Sam Martini
 Masterpiece International, LTD
 Matthew Marks Gallery
 Alexis and Mitchell Mayer
 Mary Lou and Kevin McCabe
 Jonathan McCann
 Shannon McCann

Yenisey McCloskey
 Kathrine McCoy
 Nancy McGann
 Charles McGuffog
 Cathleen McGuigan and David Berridge
 Jennifer and James McLaughlen
 The T. McLaughlin Family
 Alexandra McNear and Robert Stein
 Jennifer McSweeney
 Chris Mead
 Beatrix and Gregor Medinger
 Jeffrey Mehl
 Carol and Paul Mendez
 Julie and David Meneret
 Louise Merriman and Edward David
 Michael Davis Construction Inc.
 Michael Whaley Interiors
 Melissa Michaels
 Abby and Howard Milstein
 Modern Green Home
 Wendy and Adam Modlin
 Marit and Jonathan Molin
 J. Philip Moloney and Robert Taft
 Bridget Moore
 James Moore, Sr.
 Joanne and James Morgan
 The Morley Agency Inc.
 Linda and Robert Morris
 Jane May Moss
 Olivia Motch and Tsewang Motch
 Jeffrey and Beth Muhs
 Munder-Skiles Garden Furniture LLC
 Jill Musnicki and Jameson Ellis
 Gabe Nadel
 Paige and Arthur Nagle
 Edward T. Nahem
 Courtney and Naveen Nataraj
 Caren Nederlander and Edwin Mishkin
 Sheryl Nelson and Charles Gushee
 Deborah Nevins
 Jennifer Nevins and Ian McAllister
 New York Biologics Inc.
 Yveta Newman
 NH Design
 Nicole Adams STUDIO
 Patricia and Michael Oakley
 Claire Scholz-O'Connor and
 Thomas O'Connor
 Djida Oppenheim and Richard Alder
 Nancy and Milton Orshefsky
 Sarah Osborn and Peter Nichiporuk
 Leslie O'Shea
 Beau Ott
 Melissa Otto and Hiro Shinohara
 Owen & Broniecki Construction
 Company Inc.
 Lee Packman
 Stacy and Jonathan Paetzel
 Dawn Palo and Tacho Sandoval
 Ruth and Andrew Pardo
 Esther Paster
 Miraj Patel
 Neil Patel
 Joanne and Michael Pateman
 Peconic Bay Realty
 Pepi Design Group

Pfeifer Plastic Surgery, PLLC
 Preston T. Phillips, Architect
 Tony Piazza and Steve Gugliotti
 Salvatore Piazzolla and Grant Wilfley
 Pickering Design
 Robin Pickett
 Daniel Pine
 Judy Goff Pittman and William Pittman
 Plain-T LLC
 Linda and Jonathan Platt
 Kathleen and Joseph Policano
 Alexis Pone and Dr. Howard Kronenberg
 Amy and Martin Post
 Susan Potto and Bernd Wuebben
 Elaine and Marc Prager
 Sandra Prangle and Phillippe Laumont
 Marla Prather and Aaron Schiller
 Lloyd Princeton
 Eleanor and Rodney Propp
 Sara Putcha
 Anne and John Pyne
 William Quigley
 Gloria Rabinowitz
 Rachel Lynch Swimming Pools & Spas Inc.
 Eva and Jeremy Radtke
 John W. Rae, Jr.
 Lisa and David Rattray
 Richard Rawdin
 Red Bar Brasserie
 Red Knot
 Suzanne Allen Redpath
 Jeanne Yoa-Reese and David Reese
 Dorothy and Michael Reilly
 Lindsay and Andrew Reilly
 Deborah Rhodes
 Robin Riebling
 Lois Robbins
 Rocco A. Carriero Wealth Partners
 Nanette Rosenberg
 Peter Rosenberg
 Harriet Rosenberger
 Viola Rouhani
 Rebecca Rozen
 Patricia and David Rung
 Amy Russo
 Mary Ryan
 Sabel & Oplinger, CPA, P.C.
 Hala and James Salomon
 Christine and Vincent Sama
 Yoko Sanada
 Melissa and George Sanchez
 Mala and Jeff Sander
 Ann Sandstrom
 Sara Nightingale Gallery Inc.
 Jodi and Luke Sarsfield
 Savorian Wines
 Harriet Sawyer and Richard Demato
 Alex Scarsini
 Fern Schad and Alfred Moses
 Martine Scheuch
 Jill Scheuer and Keith Pattiz
 Betty Schlein and Fredric Weinberg
 Dr. and Mrs. Michael Schmerin
 Maria Rom-Schmidt and Kenneth Schmidt
 Joanne and Norman Schneider
 Charlotte and Peter Schoenfeld

Jean Schulz
 Lyndley and Samuel Schwab
 Judith and Michael Schwartz
 Erin and Christopher Scott
 Kevin Seaman
 Carole and Peter Segal
 Seibert & Rice Inc.
 Mark Seidenfeld
 Seifert & Associates Eyecare
 Sensoryphile Inc.
 Aline and Tom Shapiro
 Diane Shapiro
 Shelter Point
 Dr. and Mrs. Spencer Sherman
 Shine Design + Distribution
 Sandra Prangle and Phillippe Laumont
 Connie Sigel
 Debbie Silverman
 Niki Silverstein
 Sara Putcha
 Anne and John Pyne
 William Quigley
 Gloria Rabinowitz
 Rachel Lynch Swimming Pools & Spas Inc.
 Eva and Jeremy Radtke
 John W. Rae, Jr.
 Lisa and David Rattray
 Richard Rawdin
 Red Bar Brasserie
 Red Knot
 Suzanne Allen Redpath
 Jeanne Yoa-Reese and David Reese
 Dorothy and Michael Reilly
 Lindsay and Andrew Reilly
 Deborah Rhodes
 Robin Riebling
 Lois Robbins
 Rocco A. Carriero Wealth Partners
 Nanette Rosenberg
 Peter Rosenberg
 Harriet Rosenberger
 Viola Rouhani
 Rebecca Rozen
 Patricia and David Rung
 Amy Russo
 Mary Ryan
 Sabel & Oplinger, CPA, P.C.
 Hala and James Salomon
 Christine and Vincent Sama
 Yoko Sanada
 Melissa and George Sanchez
 Mala and Jeff Sander
 Ann Sandstrom
 Sara Nightingale Gallery Inc.
 Jodi and Luke Sarsfield
 Savorian Wines
 Harriet Sawyer and Richard Demato
 Alex Scarsini
 Fern Schad and Alfred Moses
 Martine Scheuch
 Jill Scheuer and Keith Pattiz
 Betty Schlein and Fredric Weinberg
 Dr. and Mrs. Michael Schmerin
 Maria Rom-Schmidt and Kenneth Schmidt
 Joanne and Norman Schneider
 Charlotte and Peter Schoenfeld

Inge Tiemens and Harmeet Singh
 Jeannie and Thomas Tisbo
 James Tolles
 Total Health Nutrients Inc.
 Courtney Treut
 Joan and James Tripp
 Paul Trotta
 Guy and Gayle Tudisco
 Erin and John Turck
 Turpan
 Patti and Michael Tuths
 Cathy Tweedy
 Diane Vahradian
 Victoria Vance
 Gordon VeneKlasen
 Victoria's Secret
 Bryn and John Vissicchio
 Wainscott Village Associates
 Micheal Warren
 Meredith Waterman
 Margaret and Drew Watson
 Catherine LaTorre-Weiner and
 Eric Weiner
 Madeline Weinrib
 Willetts Home Improvements
 Rachel Williams and Dana Didriksen
 Jill Wilpon
 Felecia Wilson
 Ivy Winick
 Laurie and David Wolfert
 Nancy Wolfin
 Marie and Kenneth Wong
 Jocelyn Worrall
 Henry Wu and Simpson Wong
 Peggy Wurm and Robert Gans
 Laura, John and Olivia Wynne
 Yabu Pushelberg
 Nina Yankowitz and Barry Holden
 Grace Schalkwyk Yowell and Edwin Yowell
 Jane Zimmy and Ron Neumann
 Cynthia Zirinsky
 Elizabeth R. Zust
 Lion Zust

DONORS TO THE COLLECTION

The Parrish recognizes the following donors with gratitude for their contributions of works of art to the Museum's permanent collection.

Richard I. Adrian
American Academy of Arts and Letters,
New York; Hassam, Speicher, Betts
and Symons Funds
The Andy Warhol Foundation for the
Visual Arts Inc.
Anonymous
Naomi S. Antonakos
Harrison and Julie Augur
Julia Childs Augur
Louis Bacon
Vivian Haime Barg
Adam Bartos
Douglas Baxter
The Broad Art Foundation
Jacqueline Brody
The James and Charlotte Park Brooks
Foundation
Elaine Grove Christensen
Jared, Marina, Bettina and Bill Cisneros

Jan Cowles
Douglas S. Cramer
Douglas S. Cramer in honor of
Dorothy Lichtenstein
Robert Dash
Muriel Davis
Andrea Greeven Douzet
Marcia Dunn and Jonathan Sobel
Anne and Joel Ehrenkranz
Agnes and Martin Ehrenreich
Susanne Emmerich in Memory of
André Emmerich
Tria Giovan
Arne and Milly Glimcher
The Carol and Arthur Goldberg
Collection
Jack W.C. Hagstrom, M.D.
Helen and Claus Hoie Charitable
Foundation
Bryan Hunt

Dr. John E. Hunt and Carol Hunt
Terri Hyland
Howard Kanovitz Foundation and
Museum purchase, with funds
provided by Dorothy Lichtenstein,
the Parrish Art Museum's Collector's
Circle, and Barbara Slifka
Mel Kendrick
Rita Krauss
Koichiro Kurita
Laurie Lambrecht
Britta Le Va and Joe Zucker
Adam Lewis and Thomas K. Chu
Dorothy Lichtenstein
Loretta and Robert Lifton
Madoo Conservancy
Jane Martin
Alexander Maynard and Pamela Lord
Henry S. McNeil
Louis K. and Susan P. Meisel
Meryl and Robert Meltzer
Carol and Ray Merritt
The Barnett and Annalee Newman
Foundation
Claire A. Nivola
Estate of Dennis Oppenheim
Dennis Oppenheim
Parrish Art Museum Collector's Circle
Betty Parsons Foundation
Susan Penzner
Prop Foundation
Robert Rauschenberg Foundation
Mary Ryan and Bruce Lebowitz
Jane Dresner Sadaka and Ned Sadaka
James Salomon
Hope Sandrow
Paul J. Schupf Lifetime Trust,
Gregory O. Koener Trustee
Dana and Andrew Stone
Amy Sullivan
Billy Sullivan
Donald Sultan
The Buddy Taub Foundation
Barbara Toll in honor of Trudy Kramer
Evelyn Toll Family Foundation
John Torreano
Spencer Tunick
Carlo Bronzini Vender
Elaine Warshaw
Philippa Weismann
Auldlyn Higgins Williams and
E.T. Williams, Jr.
Joe Zucker

Alan Shields, *The Baptism*, 1979



2014 BOARD OF TRUSTEES

Frederic M. Seegal, Chair
H. Peter Haveles, Jr., President
David Granville-Smith, Vice President
Alexandra Stanton, Vice President
Norman L. Peck, Treasurer
Jay B. Goldberg, Assistant Treasurer
Douglas Polley, Secretary

Deborah F. Bancroft
Mildred C. Brinn
William G. Cisneros
Timothy G. Davis
Ira Drukier
David M. Dubin
Regina Glocker
Nancy Hardy
Philip H. Isles
Chad A. Leat
Dorothy Lichtenstein
Allison Morrow
Michèle Pesner
Barbara J. Slifka
Marcia Dunn Sobel
Dan K. Wassong (1930–2015)
David K. Wassong

Life
Mildred C. Brinn, Chair Emeritus
Alvin Chereskin
Mrs. Jan Cowles
Fiona Druckenmiller
Mrs. Werner Otto
Mrs. Milton Petrie (1924–2015)
Susan Weber

Honorary
Leslie Rose Close
Hugh J. Freund
Montague H. Hackett, Jr.
Leslie Horn
Klaus Kertess
Henry W. Koehler
Patricia S. Patterson
Helene B. Stevens
Mrs. T. Suffern Tailer

DOCENTS & VOLUNTEERS

The Parrish Art Museum is deeply grateful to those who have volunteered their time and experience.

Gail Altomare
Virginia Aschmoneit
Grisel Baltazar
James Bauer
Binnie H. Beckerman
Nancy Berken
Rosalind Block
Marie Braccia
Angelo Cabeza
Marlene Clifford
Mary Lou Cohalan
Barbara Conti
Ann Cryan
Casey Dalene
Arlene Davis
Joan Dimonda
Dale Drake
Susan Dubner
Jacqueline Fox
Judith Freedman
Adele Friedensohn
Denise Gentile
Julia Gentile
Pamela Glazer
Blossom Gluck

Judith Grandes
Georgette Grier-Key
Chris Harden
Ann Harmon
Leslie Harrison
Jennifer Haviland
Lise King
Suzanne Knapp
Janet Lavinio
Joan Litsky
Judith Loeb
Julia Ludmer-Duberman
Laurel Maginsky
Sheila McLean
Carol Mendez
Nancy Miller
Annie and Guy Mouglin
Marge Ogilvie
Joanne Pateman
Robin Pauli
Loretta Pelosi
Ellen Postrel
Ginny Poveromo
Louis Puglisi
Rebecca Radin

Thomas Randall
Judith Saner
Gabrielle Schlichting
Martha Scriven-Campanella
Lew Sherwood
Robert Simmons
Nancy Skurnik
Barbara M. Soyars
Dinah Maxwell Smith
Wendy K. Strode
Edna Teich
Greg Therriault
Renée Trel
Irene Tully
Sarah Jaffe Turnbull
Laurie Ullman
Marianne van der Zanden
Lillian Vishno
Felicitas Wetter
Joanne Wyckoff

FINANCIAL REVIEW

JANUARY 1, 2014 – DECEMBER 31, 2014

STATEMENTS OF FINANCIAL POSITION

AS OF DECEMBER 31, 2014

ASSETS

Current Assets

Cash	\$ 35,755
Pledges Receivable, current portion:	
Operating support	20,000
The Centennial Fund and others	843,000
Prepaid expenses and other current assets	265,571
Inventory – Museum Shop	60,069
Total Current Assets	1,224,395

Assets Held for Specific Purposes	4,810,326
Pledges Receivable, net of current portion:	
The Centennial Fund and others	1,533,533
Property and Equipment, net	37,245,672
Other Assets, net	102,123

Total Assets **\$ 44,916,049**

LIABILITIES AND NET ASSETS

Current Liabilities

Notes payable	\$ 306,000
Accounts payable and accrued expenses	244,171
Deferred revenue	66,950
Conditional promises to give	102,500
Current portion of long-term debt	115,208
Total Current Liabilities	834,829

Long-Term Debt 4,017,613

Total Liabilities **4,852,442**

Net Assets

Undesignated	33,424,721
Board designated – accessions	221,272
Total Unrestricted Net Assets	33,645,993
Temporarily Restricted	2,547,385
Permanently Restricted	3,870,229
Total Net Assets	40,063,607

Total Liabilities and Net Assets **\$ 44,916,049**

STATEMENTS OF ACTIVITIES AND CHANGE IN NET ASSETS

FOR THE YEAR ENDED DECEMBER 31, 2014

REVENUE AND SUPPORT

Contributions	\$ 2,703,276
Benefit events	1,549,611
Less direct benefits to donors	(412,174)
Membership	464,620
Admissions	142,052
Government grants	400,775
Tuition and fees	394,028
Museum Shop	244,334
Less cost of sales	(109,503)
Other income	53,814
Investment income	39,270
Realized loss on sale of investments	(1,965)
Gifts in-kind	201,382
Total Revenue and Support	5,669,520

EXPENSES

Program services

Curatorial	1,928,858
Education	956,811
Museum Shop	203,646
Total program services	3,089,315

Supporting services

Management and general	868,683
Development	1,063,628
Total supporting services	1,932,311

Total Expenses **5,021,626**

Changes in Net Assets before Accessions of Art and Depreciation and Amortization	647,894
Accessions of Art	(45,500)
Depreciation and Amortization	(803,344)

Changes in Net Assets (200,950)

Net Assets, beginning of year 40,264,557

Net Assets, end of year **\$ 40,063,607**

Inspired by the natural setting and artistic life of Long Island's East End, the Parrish Art Museum illuminates the creative process and how art and artists transform our experiences and understanding of the world and how we live in it.

The Museum fosters connections among individuals, art, and artists through care and interpretation of the collection, presentation of exhibitions, publications, educational initiatives, programs, and artists-in-residence.

The Parrish is a center for cultural engagement, an inspiration and destination for the region, the nation, and the world.

Phillip Pearlstein, *Two Nudes on a Bamboo Recliner and Linoleum*, 1984



METRICS

NOVEMBER 10,
2012 –
DECEMBER 31,
2014

255

CONCERTS, LECTURES, TALKS, & FILMS

190,287

WEBSITE USERS

172

COUNTRIES FROM WHICH WEBSITE WAS ACCESSED

92%

INCREASE IN FACEBOOK FOLLOWERS

200%

INCREASE IN TWITTER FOLLOWERS

900

MOBILE APP DOWNLOADS

27

WEEKS OF ART CAMP

20

WEEKS OF SUMMER CAMPS & WORKSHOPS

132

OPEN STUDIO SESSIONS FOR FAMILIES & TEENS

561

TOURS AND WORKSHOPS FOR SCHOOLS & THE COMMUNITY

Installation view of *Art. Illuminated.*,
Parrish Art Museum.
Cover photo: Daniel Gonzalez
Design: Perrin Studio

Non-Profit Org.
U.S. Postage
PAID
Permit No.3
Water Mill NY



PARRISH ART MUSEUM

Art. Illuminated.

279 Montauk Highway, Water Mill, NY 11976
parrishart.org

Address Service Requested